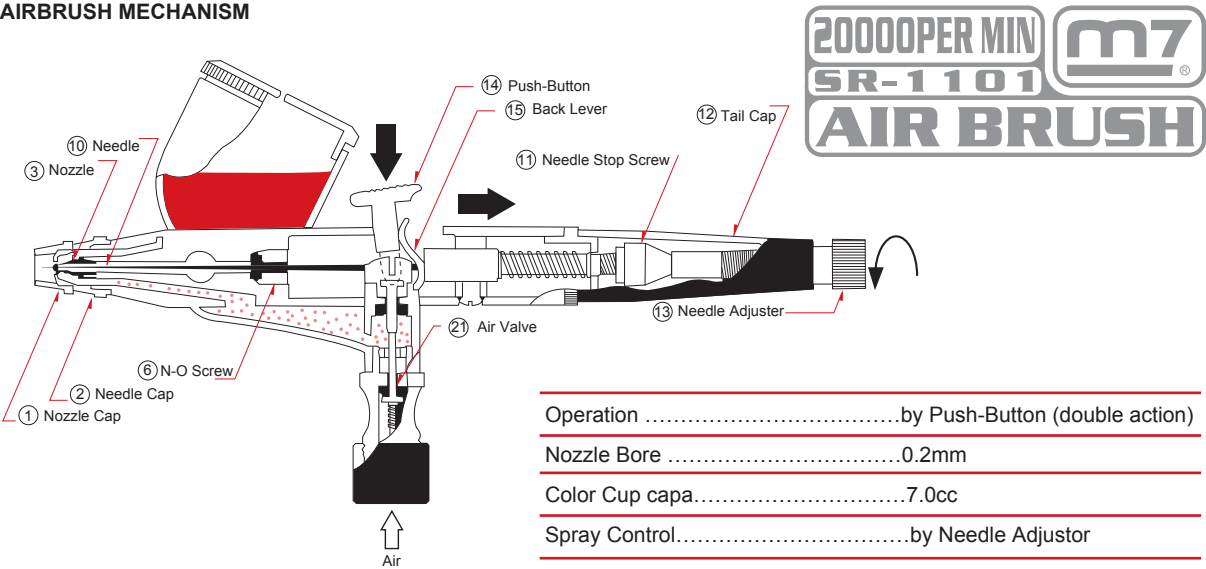


AIRBRUSH MECHANISM

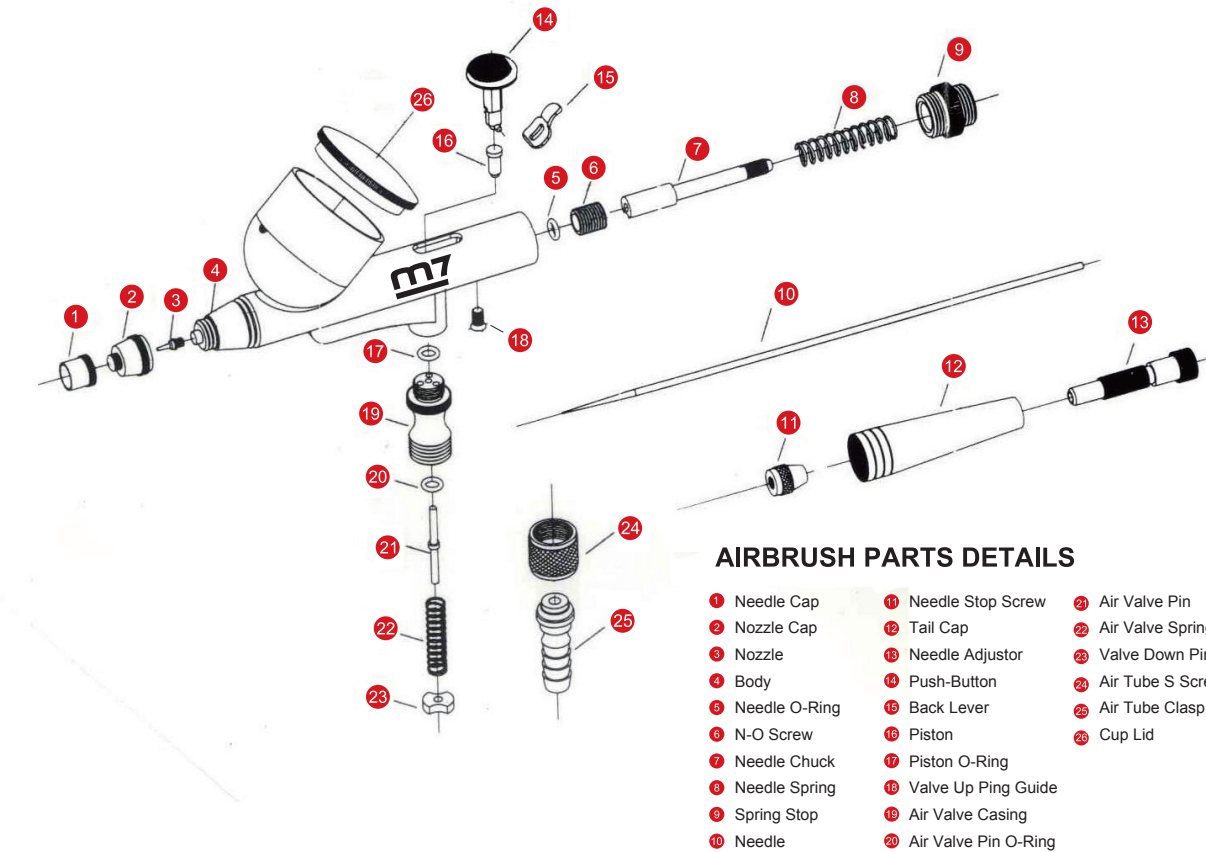


HOW TO OPERATE

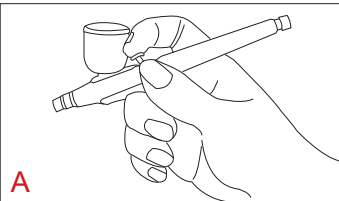
A small or large amount of air emerges out of 3 Nozzle by the slight or hard press of 14 Push-Button accordingly. Color comes in atomization by drawing Push-Button backward gradually as it is being pressed.

Airbrushing is done from fine spray to broader area in accordance with the degree of pressing and drawing Push-Button and the distance between Hand Piece and a surface. 13 Needle Adjustor makes possible to draw definite width of line as desired, and therefore broader pattern is obtained by rotating it to the direction of arrow mark.

Make airbrushing in a small amount of air for sandy pattern by removing both the 1 and 2 caps of Needle and Nozzle.

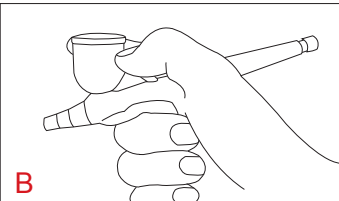


How to Hold Airbrush



A.Put the index finger on Push-Button and place the thumb on body, while holding the connected part of Air Hose by the remaining three fingers and palm.

B.Put the thumb on Push-Button and place the index finger on body, while holding the connected part of Air Hose by the remaining three fingers and palm.

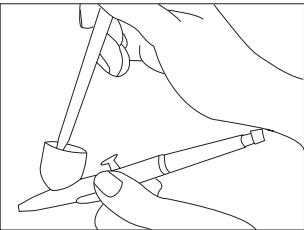


Quality

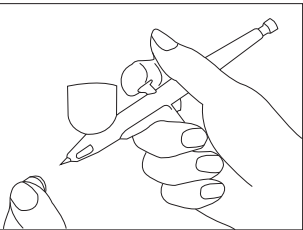
Airbrush is manufactured and finished materials chosen strictly and super precise processing. Nozzle is made of platinum alloy, Needle of stainless steel and body of brass.

Cautions

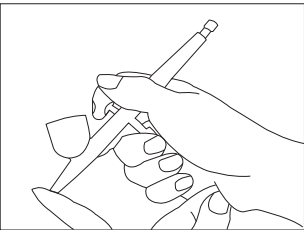
- The greatest care is needed to operate Airbrush Hand Piece, because of a very precision instrument, especially the three points of Nozzle, Nozzle Cap and Needle Tip which are the most delicate and precision parts.
- A special attention should be drawn not to let go of the finger suddenly out of Push-Button when drawing it hard, since Nozzle may often be transformed or damaged by its shock.
- Clean Hand Piece right after using before color hardens.



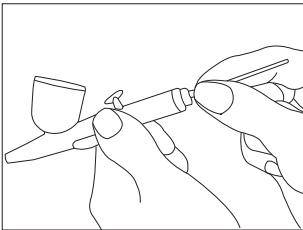
1.Throw off the color remaining in cup, pour water and then wash off well by a brush. Again pour water and press Push-Button to spray water.



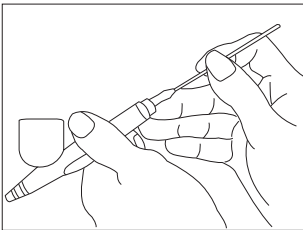
3.Color may often stick to the inside of Needle Cap and /or tip of Needle and Nozzle when an airbrush has been used for a long time. Wash off by a brush carefully not to damage Needle Tip.



2.Close softly Nozzle Cap and press Push-Button to flow water upstream. Repeat as many times as the color dose not emerge in the upstream water.



4.In order to clean Needle, remove Tail Cap, loosen Needle Stop Screw, Pull out Needle and wipe it with tissue paper or cloth.



5.When setting Needle, place a finger on it and insert carefully not to damage Needle Tip. Apply industrial alcohol or remover liquid when it is not easy to remove dirt by color ink, acrylic color, etc.

TROUBLE SHOOTING WHEN NOT WORKING WELL.

- Problems
1. Bubbles appear in cup.
 2. Spray has abnormally wide or double pattern.
 3. Color spreads like bolts(Paramecia pattern)

Possibilities and solutions

- 1.Nozzle is blocked, or split, or transformed. Needle is not fitted to Caps of Nozzle and Needle. Check Nozzle by a magnifier and replace it in existence of something unusual.
- 2.Solid pigment particle jammed in Nozzle or sticked to Needle tip, or Needle tip bent. Replace Needle when bent, and also required to replace Nozzle because of often damaged by bent needle.
- 3.Nozzle tip too close to a picture, or Push-Button drawn too much. Therefore, keep Nozzle tip away, or press fully Push-Button draw it slightly.

High performance Airbrush Hand Piece makes you want to create.

Color Cup attached to body side, adjustable angle for easy operation in accordance with a work of art. Applied for various purposes from fine line to broad area.

- **Performance** Operation By Push-Button
Nozzle Bore ... 0.2mm
Color Cup capa...7.0cc
Spray Control.....by Needle Adjustor
- **Use:** photo retouch, illustration, design, minute craft, hobby model.
- **Colors applied:** color ink, acrylic color, water color, etc.