



## **Read this manual carefully before installing, operating, servicing or repairing.**

### **Working environment:**

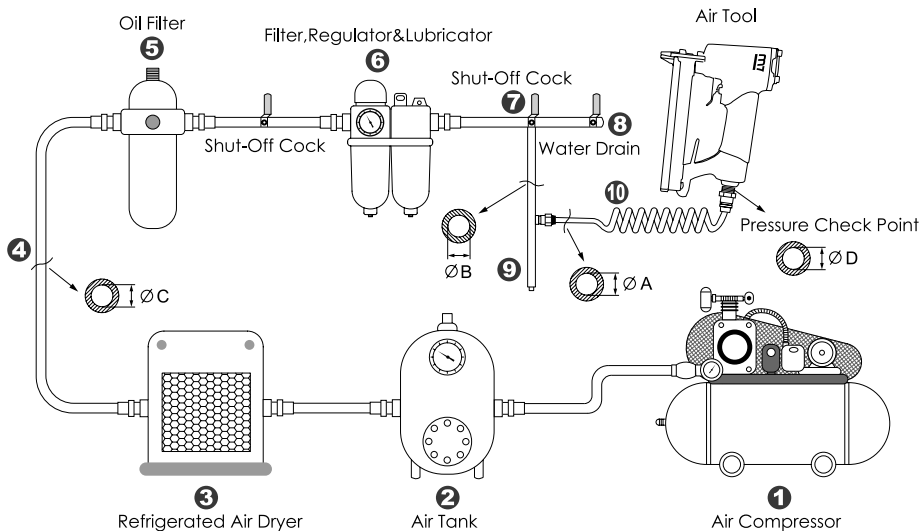
1. Using these tools in any potentially explosive environment is strictly prohibited.
2. It is always recommended that these types of tools must be operated when standing on a solid or firm location.
3. Always use these tools in a well ventilated area.
4. Slipping, stumbling and falling are the major causes of potential serious injury, therefore, a clean and clutter free surface in the working area before operating the tools is strongly recommended.

### **Air supply and connection requirements:**

1. The maximum recommended air pressure during operation must not exceed 90 psi (6.3bar). Higher air pressure may create unsafe operating conditions for the tool and the user.
2. The compressed air should be cooled and have a water filter installed at the outlet end of the compressor. Even with a water filter installed, some water may still condense in the piping or hose and will enter the tool mechanism causing premature damage to the tool. Therefore, it is recommended to install an air filter-lubricator device somewhere between the tool and the compressor.
3. Always use an air compressor of the proper capacity to operate each tool.
4. Clean the hose with a blast of compressed air before connecting the hose to the air tool. This will prevent both moisture and dust inside the hose from entering the tool and causing possible rust or malfunction.



## Ideal system connection:



## Piping diameters and length requirement:

- ★The diameter  $\Phi A$  required for the inlet pipe (10) is recommended on the specification table.
- ★The diameter  $\Phi B$  required for the branch pipe (from 7 to 9) should be 2 times as large as  $\Phi A$ .  
 $\Phi B = 2 \times \Phi A$
- ★The diameter  $\Phi C$  required for the primary air supply (from 1 to 8) should be 3 times as large as  $\Phi A$ .  
 $\Phi C = 3 \times \Phi A$
- ★The length for the inlet pipe (10) should be less than 15 feet (4.5m).



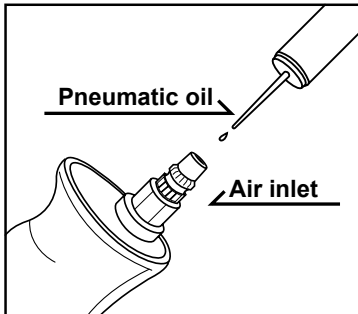
## **Warning:**

1. This tool should only be used as a hand operated tool. It is powered by compressed air and is not insulated against electric shock.
3. High sound levels may cause hearing damage. Always wear hearing protection when operating this tool.
4. User must wear proper clothing. Loose clothing, long hair, stings, straps, belts and jewelry should not be worn when operating this tool.
5. Wearing eye/face protection can reduce the danger of high-speed materials being ejected by the tool.
6. Working with certain materials may create emission of dust and fumes, which may cause a potential explosive environment and a hazard to the health. Wearing correct breathing protection and taking some preventive measures are recommended.
7. Make certain to stand on a solid or firm location and keep body in well-balanced position while operating this tool.
8. Using this tool will cause particles when chipping or demolishing. Make sure there is no bystander within the vicinity of working area.
9. To avoid vibration injury, the user should use other effective damping devices, in stead of free hand, to hold the chisel when necessary.
10. Make sure that the all the specifications of the nailer to be used are compatible with this tool.
11. Make sure that the direction of the nailer generated from the chisel is properly directed so as not to create a hazard.
12. Always turn off the air supply and disconnect the air hose before changing the chisel or making adjustments on this tool.
13. Release the throttle trigger to avoid danger if there is a failure of energy supply and when connecting or disconnecting the air hose.
14. Beware if the compressed air hose breaks unexpectedly, or is being connected or disconnected improperly. This whipping action may cause injury.
15. Prolonged use will cause user fatigue. Periodic breaks are recommended for user safety.
16. It is recommended to stop operating the tool whenever the user experiences discomfort, tingling or pain during use.
17. Make sure there is no gas or combustible material stored near the tool when servicing, changing chisel, or storage.
18. Avoid storing this tool where it is subject to high humidity.



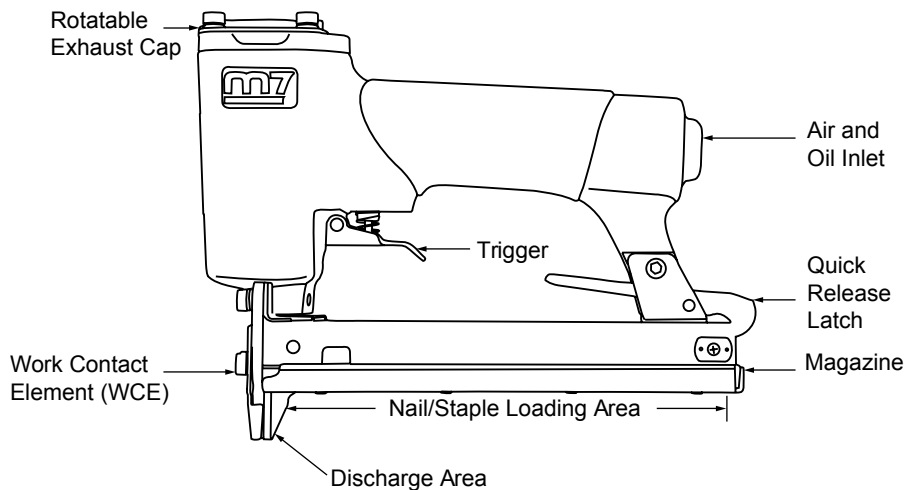
## Maintenance:

1. Before connecting the air hose to this tool or after operating, apply 4 or 5 drops of pneumatic oil into the air inlet and run it for several seconds, referring this operation to the attached picture.
2. Maintain this tool regularly by performing the same oiling application every 3 to 4 hours of operation.
3. Do not lubricate tools with flammable or volatile liquids. Use only the lubricant recommended by Mighty-Seven or authorized dealers. Any other lubricant will lead to reduce performance of the tool and permanent damage. Whenever any unauthorized lubricant is used by accident, flush it immediately with recommended pneumatic oil.
4. Follow all the recycling laws of waste disposal once this tool is no longer usable.



## Regular maintenance

## Nailer/stapler specifications





## Troubleshooting, continued:

### **Symptom: Air leak near top of nailer/stapler or trigger area.**

#### **Problem**

Loose screws.  
Worn or damaged o-rings or seals

#### **Solutions**

Tighten screws.  
Contact factory for service. +(886) 4 23358567

### **Symptom: Nailer/stapler does nothing or operates sluggishly.**

#### **Problem**

Inadequate air supply.  
Inadequate lubrication.  
Worn or damaged o-rings or seals.

#### **Solutions**

Check compressor settings Check air hose/filters for kinks or blockage. Oil nailer/stapler per instruc.  
Contact factory for service. +(886) 4 23358567

### **Symptom: Air leak near bottom of nailer/stapler.**

#### **Problem**

Loose screws.  
Worn or damaged o-rings or bumper.

#### **Solutions**

Tighten screws.  
Contact factory for service. +(886) 4 23358567

### **Symptom: Nailer/stapler jams frequently.**

#### **Problem**

Incorrect fasteners.  
Damaged fasteners.  
Magazine or nose screw loose.  
Magazine is dirty.  
Driver is worn or damaged.

#### **Solutions**

Verify fasteners are the correct size.  
Replace with undamaged fasteners Tighten screws.  
Clean magazine  
Contact factory for service. +(886) 4 23358567

### **Symptom: Other**

#### **Problem**

Other

#### **Solutions**

Contact factory for service. +(886) 4 23358567



进行安装、操作、维修或更换零件之前,请务必详读本使用手册

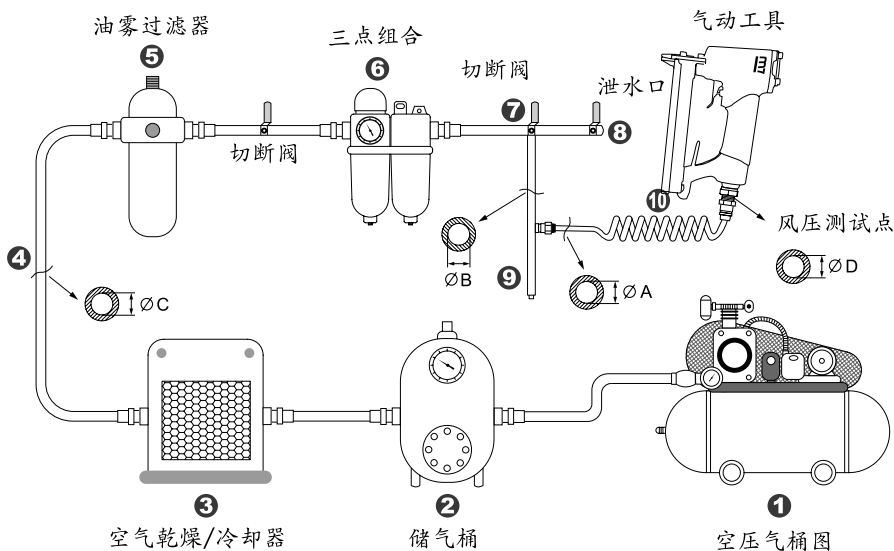
#### 工作环境:

1. 严格禁止在任何具有爆炸性气体的环境中使用本气动工具。
2. 当使用本气动工具时务必站立在坚实稳固的物体或位置上。
3. 使用本气动工具的场所, 其通风条件必须十分良好。
4. 滑倒、绊倒和从高处跌落...等等状况乃操作气动工具时最容易发生的意外状况, 因此在操作之前, 务必先将工作场所清理干净。

#### 风源及安装需求

1. 操作本气动工具的最大空气压力值不得超过90psi。高于此压力值时将可能对本气动工具或使用者带来危险。
2. 用于本气动工具的压缩空气必须经过冷却处理, 在空压机出口端务必加装一只过滤器, 以便过滤压缩空气中的水分。即便如此, 仍会有少部分的水气凝结于空压管路当中, 甚至渗入本气动工具的机械结构内部, 造成本气动工具难以预期的损害。是故, 压缩空气的管路在进入本气动工具之前的某适当位上, 应予加装一只三点组合。
3. 使用者应根据各种不同气动工具的需求, 选择不同规格的空气压缩机。
4. 开始操作本气动工具之前, 应先将管路中的水气排除干净。如此, 当可避免残留在压缩空气中的水分或灰尘进入本气动工具内部, 将影响到本气工具的正常性能, 甚至造成损坏。

## 理想的管路安装方式:



## 空压系统各部管路之直径需求:

- ★ 连结本气动工具的空压软管 (10) 之管径  $\phi A$  清楚标示于下页规格表当中, 请参照使用。
- ★ 连接主管路及空压软管的歧管 (从 (7) 到 (9)), 其管径  $\phi B$  最少必须是空压软管  $\phi A$  的两倍。  $\phi B = 2 \times \phi A$
- ★ 主管路 (从 (1) 到 (8)) 的管径  $\phi C$  应为空压软管  $\phi A$  的三倍。  $\phi C = 3 \times \phi A$
- ★ 连接本气动工具的空压软管其长度应短于15英尺 (不得长于15英尺 / 4.5米)。



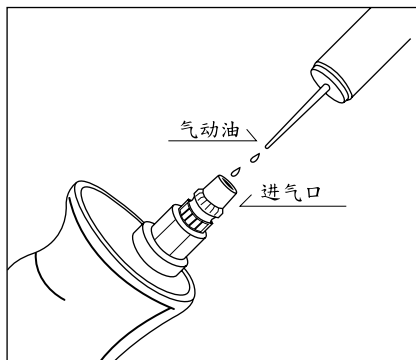


1. 本气动工具完全采用压缩空气来加以驱动,仅限以手动方式进行操作。因本气动工具并不具效果,故使用时特别注意不可接近电源。
2. 高分贝的噪音可能会使听力受损。故当使用本气动工具时请务必戴上防护耳罩。
3. 使用者在使用本气动工具时,应绝对避免穿着宽松的衣服或配戴过长的腰带、珠宝、首饰…等等物品;长发发亦必须包扎妥当。
4. 为防范因异物或磨屑飞出而造成危险,操作本气动工具时务必穿戴眼部/脸部护具。
5. 本气动工具运用在某些特定材质时会射出粉屑和烟尘,此现象将会使工作环境潜藏爆炸性,并对人体健康造成危害。因此使用时务必配戴呼吸保护器具和适当的防护措施。
6. 操作时当站立在稳固坚实的物体或位置上,在身体平衡无虞的状况下才能操作本气动工具。
7. 使用本气动工具将造成物碎屑的喷溅,故作业前请务必确定工作范围内没有其它不相关的旁观者。
8. 为有效降低震动所造成的伤害,必要时采用有效的减震工具或防范措施来持握本气动工具。
9. 作业之前请务必确认钉子规格与本气动工具相符。
10. 使用前务必确认碎屑产生的方向不会产生任何的危险。
11. 在更换钉子或调整本气动工具之前,请务必关闭风源,并将本气动工具与空压机软管脱离。
12. 当连接或脱离空压机软管时,风源供应若产生问题,应立即释放扳机,以免造成危险。
13. 不当拆卸、连接空压机软管,或非预期性的软管断裂都将造成空压机软管的任意甩动,此类危险操作之时,宜特别注意。
14. 长时间使用本气动工具将会造成使用者疲劳,为了使用者的安全着想,请务必实施周期性地休息。
15. 在使用中有任何不适、颤抖、或疼痛的感觉时时,请务必立即停机休息。
16. 更换、拆卸、维修、存放及操作本气动工具的场所周遭,绝对不得存放瓦斯或其它任何可燃性的气体。
17. 应尽可能避免将本气动工具存放在高湿度的环境当中。



## 维护与保养：

1. 本气动工具于使用之前及使用完毕之后，均应从进气口处加入4或5c.c的气动油，并空转几秒以清洁各零部件。
2. 每使用3至4个小时，请务必再次添加气动油，并空转几秒以进行保养。此项作业对于维护本气动工具的性能，及提升其使用受寿命具有绝对的帮助。
3. 保养本气动工具时绝对禁止使用任何易燃性或具挥发性的液体。仅建议使用经本厂授权的服务中心所介绍的润滑油脂。任何其它的润滑油脂均有可能会降低本气动工具的功能，甚至造成永久性的损坏。当不小心使用到其它润滑油脂时，则请立即用建议的润滑油脂将其清洗干净。
4. 如果本气动工具已然不堪使用，请务必遵照相关废弃物回收法令进行后续处置。



气动工具之日常润滑保养

Item No.	Shank Dia	Head Die	Nail Length	Collated	Driving Power (7kg/cm <sup>2</sup> )	Load Capacity	Dimensions (H*W*L)	Weight	Working Pressure
	mm	mm	mm		ft-lb	pcs	mm	kg	psi
SJ-CN55	2.1-2.3	5.0-5.7	25-57	Wire	36.54	300-350	283*131*270	2.8	90
SJ-CN70	2.3-2.9	5.7-7.0	45-70	Wire	61.07	150-300	303*129*307	3.7	90

Item No.	Gauge	Nail Length	Shank Thickness	Shank Width	Load Capacity	Weight	Working Pressure
		mm	mm	mm	pcs	kg	psi
SJ-1830F	18	10-30	1.0	1.2	100	1.2	90
SJ-1650T	16	25-50	1.4	1.6	100	2.35	90
SU-C422J	20	6-22	4.0	1.15*0.58	100	1.15	90
SU-C1022J	20	6-22	10.0	1.15*0.58	100	1.20	90
SJ-1850F	18	5/8"-2"	1.0	1.2	100	1.40	90
SU-8016	21	1/4"-5/8"	12.8	0.95*0.65	100	0.96	90
SU-9025	18	3/8"-1"	5.8	1.25*1.0	100	1.10	90
SU-9040	18	3/8"-1-9/16"	5.8	1.25*1.0	100	2.18	90

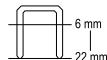
Uncertainty K=0.5a if  $a \leq 5 \text{ m/s}^2$  or K=0.4a if  $a > 5 \text{ m/s}^2$

Item No.	釘厚	釘長	釘寬	釘頭寬	裝釘數量	重量	工作壓力
	mm	mm	mm	mm	pcs	kg	psi
SJ-1830F	18	10-30	1.0	1.2	100	1.2	90
SJ-1650T	16	25-50	1.4	1.6	100	2.35	90
SU-C422J	20	6-22	4.0	1.15*0.58	100	1.15	90
SU-C1022J	20	6-22	10.0	1.15*0.58	100	1.20	90
SJ-1850F	18	5/8"-2"	1.0	1.2	100	1.40	90
SU-8016	21	1/4"-5/8"	12.8	0.95*0.65	100	0.96	90
SU-9025	18	3/8"-1"	5.8	1.25*1.0	100	1.10	90
SU-9040	18	3/8"-1-9/16"	5.8	1.25*1.0	100	2.18	90

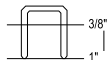
Uncertainty K=0.5a if  $a \leq 5 \text{ m/s}^2$  or K=0.4a if  $a > 5 \text{ m/s}^2$



**SJ-1830F**  
**SJ-C1830F**



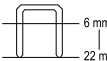
**SU-C422J**



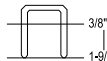
**SU-9025**



**SJ-1650T**



**SU-C1022J**



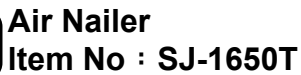
**SU-9040**



**SJ-1850F**



**SU-8016**



# Part List

Item No : SJ-1650T

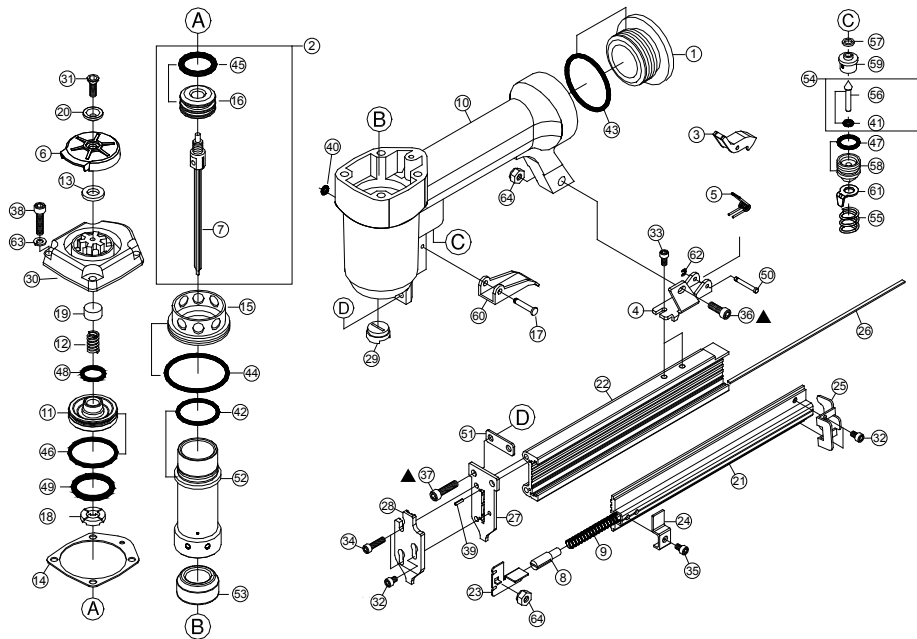
No.	Index No.	Description	Q'ty
1	SJ-1650TNP01	END CAP	1
2	SJ-1650TNP02	LATCH	1
3	SJ-1650TNP03	SPRING	1
4	SJ-1650TNP04	COVER PLATE(B)	1
5	SJ-1650TNP05	MAGAZINE RETAINER	1
6	SJ-1650TNP06	PUSHER PIN (2PCS)	1 SET
7	SJ-1650TNP07	STOP PLATE	1
8	SJ-1650TNP08	COVER PLATE(A)	1
9	SJ-1650TNP09	PISTON STOP	1
10	SJ-1650TNP10	DRIVER ASSY.	1
11	SJ-1650TNP11	PISTON STOP	1
12	SJ-1650TNP12	HEAD VALVE CAP	1
13	SJ-1650TNP13	COMPRESSION SPRING	1
14	SJ-1650TNP14	MAGAZINE ASSY.	1
15	SJ-1650TNP15	TRIGGER VALVE CAP	1
16	SJ-1650TNP16	COMPRESSION SPRING	1
17	SJ-1650TNP17	TRIGGER ASSY.	1
18	SJ-1650TNP18	TRIGGER VALVE SEAT	1
19	SJ-1650TNP19	TRIGGER	1
20	SJ-1650TNP20	CONTACT LEVER	1
21	SJ-1650TNP21	GUIDE PLATE	1
22	SJ-1650TNP22	PUSHER	1
23	SJ-1650TNP23	PUSHER SPRING (2PCS)	1 SET
24	SJ-1650TNP24	BAR	1
25	SJ-1650TNP25	SUPPORT	1
26	SJ-1650TNP26	UPPER SAFETY	1
27	SJ-1650TNP27	ROLLER	1
28	SJ-1650TNP28	COMPRESSION SPRING	1
29	SJ-1650TNP29	DRIVER SET	1
30	SJ-1650TNP30	MAGAZINE CAP	1
31	SJ-1650TNP31	BODY	1
32	SJ-1650TNP32	CYLINDER CAP	1
33	SJ-1650TNP33	CAP SEAL	1
34	SJ-1650TNP34	HEAD VALVE SEAT	1
35	SJ-1650TNP35	GASKET	1
36	SJ-1650TNP36	CYLINDER	1

No.	Index No.	Description	Q'ty
37	SJ-1650TNP37	BUMPER	1
38	SJ-1650TNP38	MAIN PISTON	1
39	SJ-1650TNP39	COLLAR	1
40	SJ-1650TNP40	NOZZLE	1
41	SJ-1650TNP41	EXHAUST CAP	1
42	SJ-1650TNP42	TRIGGER VALVE ASSY.	1
43	SJ-1650TNP43	EXHAUST CAP RING	1
44	SJ-1650TNP44	TRIGGER VALVE STEM	1
45	SJ-1650TNP45	MAGAZINE SEAT	1
46	SJ-1650TNP46	FLAT HD.BOLT	1
47	SJ-1650TNP47	HEX.SOC.HD.BOLT	1 SET
48	SJ-1650TNP48	HEX.SOC.HD.BOLT	1 SET
49	SJ-1650TNP49	HEX.SOC.HD.BOLT	1 SET
50	SJ-1650TNP50	HEX.SOC.HD.BOLT	1
51	SJ-1650TNP51	HEX.SOC.HD.BOLT	1 SET
52	SJ-1650TNP52	HEX.SOC.HD.BOLT	1 SET
53	SJ-1650TNP53	HEX.SOC.HD.BOLT	1 SET
54	SJ-1650TNP54	HEX.SOC.HD.BOLT	1 SET
55	SJ-1650TNP55	SPRING PIN (3PCS)	1 SET
56	SJ-1650TNP56	SPRING PIN	1
57	SJ-1650TNP57	O-RING	1
58	SJ-1650TNP58	O-RING	1
59	SJ-1650TNP59	O-RING	1
60	SJ-1650TNP60	O-RING	1
61	SJ-1650TNP61	O-RING (3PCS)	1 SET
62	SJ-1650TNP62	O-RING (2PCS)	1 SET
63	SJ-1650TNP63	O-RING	1
64	SJ-1650TNP64	O-RING (2PCS)	1 SET
65	SJ-1650TNP65	O-RING	1
66	SJ-1650TNP66	O-RING	1
67	SJ-1650TNP67	PIN	1
68	SJ-1650TNP68	E-RING	1
69	SJ-1650TNP69	SPRING WASHER	1 SET
70	SJ-1650TNP70	SPRING WASHER	1 SET
71	SJ-1650TNP71	LOCK NUT	1
72	SJ-1650TNP72	LOCK NUT (2PCS)	1 SET



## Air Nailer

**Item No : SJ-1830F**



# Part List

Item No : SJ-1830F

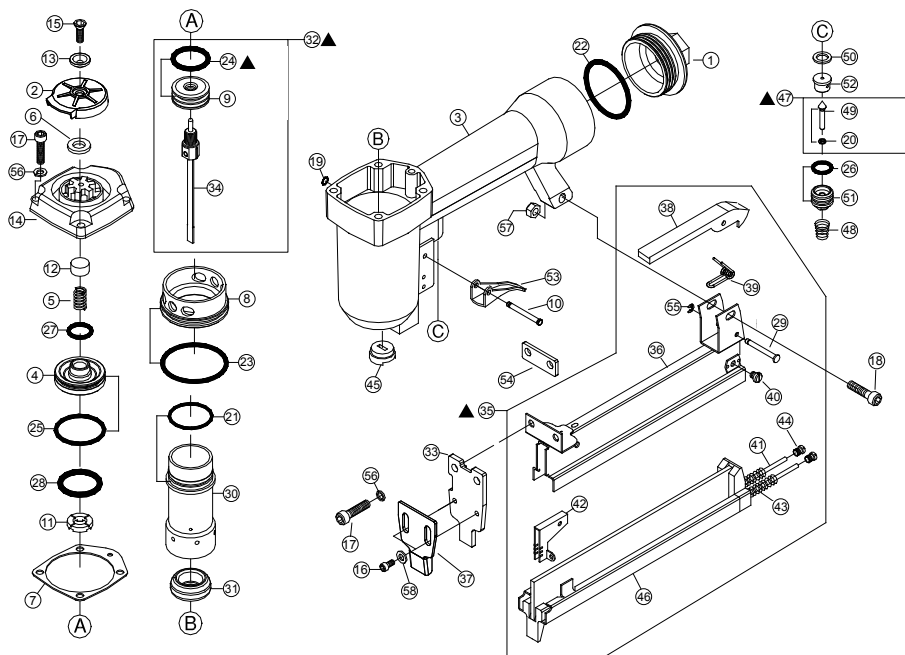
No.	Index No.	Description	Q'ty
1	SJ-C1830FNP01	END CAP	1
2	SJ-C1830FNP02	DRIVER ASSY.	1
3	SJ-C1830FNP03	LATCH	1
4	SJ-C1830FNP04	SUPPORT	1
5	SJ-C1830FNP05	SPRING	1
6	SJ-C1830FNP06	EXHAUST CAP	1
7	SJ-C1830FNP07	DRIVER SET	1
8	SJ-C1830FNP08	PUSHER PIN	1
9	SJ-C1830FNP09	PUSHER SPRING	1
10	SJ-C1830FNP10	BODY	1
11	SJ-C1830FNP11	HEAD VALVE PISTON	1
12	SJ-C1830FNP12	COMPRESSION SPRING	1
13	SJ-C1830FNP13	PISTON STOP	1
14	SJ-C1830FNP14	CAP SEAL	1
15	SJ-C1830FNP15	COLLAR	1
16	SJ-C1830FNP16	MAIN PISTON	1
17	SJ-C1830FNP17	PIN	1
18	SJ-C1830FNP18	PISTON STOP	1
19	SJ-C1830FNP19	PISTON STOP	1
20	SJ-C1830FNP20	EXHAUST CAP RING	1
21	SJ-C1830FNP21	MAGAZINE CAP	1
22	SJ-C1830FNP22	MAGAZINE SEAT	1
23	SJ-C1830FNP23	PUSHER	1
24	SJ-C1830FNP24	MAGAZINE RETAINER	1
25	SJ-C1830FNP25	STOP PLATE	1
26	SJ-C1830FNP26	BAR	1
27	SJ-C1830FNP27	GUIDE PLATE	1
28	SJ-C1830FNP28	COVER PLATE	1
29	SJ-C1830FNP29	NOZZLE	1
30	SJ-C1830FNP30	CYLINDER CAP	1
31	SJ-C1830FNP31	FLAT HD.BOLT	1
32	SJ-C1830FNT32	HEX.SOC.HD.BOLT (3PCS)	1 SET

No.	Index No.	Description	Q'ty
33	SJ-C1830FNT33	HEX.SOC.HD.BOLT (2PCS)	1 SET
34	SJ-C1830FNT34	HEX.SOC.HD.BOLT (2PCS)	1 SET
35	SJ-C1830FNP35	HEX.SOC.HD.BOLT	1
36	SJ-C1830FNP36	HEX.SOC.HD.BOLT	1
37	SJ-C1830FNT37	HEX.SOC.HD.BOLT (2PCS)	1 SET
38	SJ-C1830FNT38	HEX.SOC.HD.BOLT (4PCS)	1 SET
39	SJ-C1830FNT39	SPRING PIN (2PCS)	1 SET
40	SJ-C1830FNP40	O-RING	1
41	SJ-C1830FNP41	O-RING	1
42	SJ-C1830FNP42	O-RING	1
43	SJ-C1830FNP43	O-RING	1
44	SJ-C1830FNP44	O-RING	1
45	SJ-C1830FNP45	O-RING	1
46	SJ-C1830FNP46	O-RING	1
47	SJ-C1830FNP47	O-RING	1
48	SJ-C1830FNP48	O-RING	1
49	SJ-C1830FNP49	O-RING	1
50	SJ-C1830FNP50	PIN	1
51	SJ-C1830FNP51	SPACER	1
52	SJ-C1830FNP52	CYLINDER	1
53	SJ-C1830FNP53	BUMPER	1
54	SJ-C1830FNP54	TRIGGER VALVE ASSY.	1
55	SJ-C1830FNP55	COMPRESSION SPRING	1
56	SJ-C1830FNP56	TRIGGER VALVE STEM	1
57	SJ-C1830FNP57	SEAL	1
58	SJ-C1830FNP58	TRIGGER VALVE GUIDE	1
59	SJ-C1830FNP59	TRIGGER VALVE SEAT	1
60	SJ-C1830FNP60	TRIGGER	1
61	SJ-C1830FNP61	TRIGGER STOP	1
62	SJ-C1830FNP62	E-RING	1
63	SJ-C1830FNT63	SPRING WASHER (4PCS)	1 SET
64	SJ-C1830FNT64	LOCK NUT (2PCS)	1 SET



# Air Stapler

Item No : SU-C422J





# Part List Item No : SU-C422J

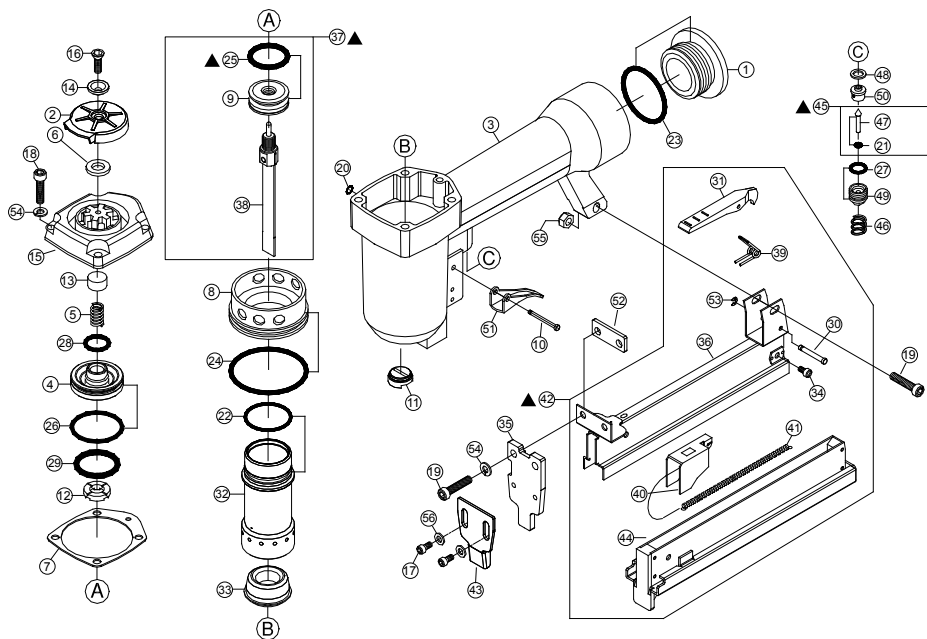
No.	Index No.	Description	Q'ty
1	SU-C422JNP01	END CAP	1
2	SU-C422JNP02	EXHAUST CAP	1
3	SU-C422JNP03	BODY	1
4	SU-C422JNP04	HEAD VALVE PISTON	1
5	SU-C422JNP05	COMPRESSION SPRING	1
6	SU-C422JNP06	PISTON STOP	1
7	SU-C422JNP07	CAP SEAL	1
8	SU-C422JNP08	COLLAR	1
9	SU-C422JNP09	MAIN PISTON	1
10	SU-C422JNP10	PIN	1
11	SU-C422JNP11	PISTON STOP	1
12	SU-C422JNP12	PISTON STOP	1
13	SU-C422JNP13	EXHAUST CAP RING	1
14	SU-C422JNP14	CYLINDER CAP	1
15	SU-C422JNP15	FLAT HD.BOLT	1
16	SU-C422JNT16	HEX.SOC.HD.BOLT (2PCS)	1 SET
17	SU-C422JNT17	HEX.SOC.HD.BOLT (6PCS)	1 SET
18	SU-C422JNP18	HEX.SOC.HD.BOLT	1
19	SU-C422JNP19	O-RING	1
20	SU-C422JNP20	O-RING	1
21	SU-C422JNP21	O-RING	1
22	SU-C422JNP22	O-RING	1
23	SU-C422JNP23	O-RING	1
24	SU-C422JNP24	O-RING	1
25	SU-C422JNP25	O-RING	1
26	SU-C422JNP26	O-RING	1
27	SU-C422JNP27	O-RING	1
28	SU-C422JNP28	O-RING	1
29	SU-C422JNP29	PIN	1

No.	Index No.	Description	Q'ty
30	SU-C422JNP30	CYLINDER	1
31	SU-C422JNP31	BUMPER	1
32	SU-C422JNP32	DRIVER ASSY.	1
33	SU-C422JNP33	COVER PLATE	1
34	SU-C422JNP34	DRIVER SET	1
35	SU-C422JNP35	MAGAZINE ASSY.	1
36	SU-C422JNP36	MAGAZINE CAP SET	1
37	SU-C422JNP37	ADJUSTABLE PLATE	1
38	SU-C422JNP38	LATCH	1
39	SU-C422JNP39	LATCH SPRING	1
40	SU-C422JNT40	RETAINER SCREW (2PCS)	1 SET
41	SU-C422JNT41	GUIDE STEM (2PCS)	1 SET
42	SU-C422JNP42	PUSHER	1
43	SU-C422JNT43	PUSHER SPRING (2PCS)	1 SET
44	SU-C422JNT44	HEX.SOC.SET SCREW (2PCS)	1 SET
45	SU-C422JNP45	NOZZLE	1
46	SU-C422JNP46	MAGAZINE SEAT SET	1
47	SU-C422JNP47	TRIGGER VALVE ASSY.	1
48	SU-C422JNP48	COMPRESSION SPRING	1
49	SU-C422JNP49	TRIGGER VALVE STEM	1
50	SU-C422JNP50	SEAL	1
51	SU-C422JNP51	TRIGGER VALVE GUIDE	1
52	SU-C422JNP52	TRIGGER VALVE SEAT	1
53	SU-C422JNP53	TRIGGER	1
54	SU-C422JNP54	SPACER	1
55	SU-C422JNP55	E-RING	1
56	SU-C422JNT56	SPRING WASHER (6PCS)	1 SET
57	SU-C422JNP57	LOCK NUT	1
58	SU-C422JNT58	FLAT WASHER (2PCS)	1 SET



# Air Stapler

Item No : SU-C1022J



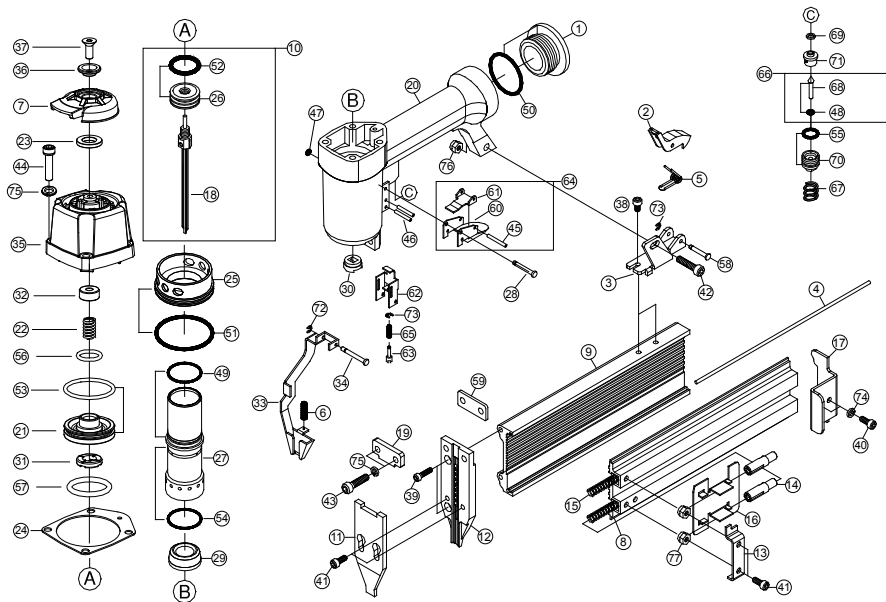
# Part List Item No : SU-C1022J

NO.	INDEX NO.	DESCRIPTION	Q'TY	NO.	INDEX NO.	DESCRIPTION	Q'TY
01	SU-C1022JNT01	Screw (6PCS)	1set	29	SU-C1022JNP29	Trigger	1
02	SU-C1022JNP02	Exhaust Cover	1	30	SU-C1022JNP30	Step Pin	1
03	SU-C1022JNP03	Compression Spring	1	32	SU-C1022JNP32	O-Ring	1
04	SU-C1022JNP04	Seal, Air	1	33	-	Piston Head	1
05	SU-C1022JNP05	Cylinder Cap Ass'y	1	34	-	Pin	1
06	SU-C1022JNP06	O-Ring	1	35	-	Spring Pin	1
07	SU-C1022JNP07	O-Ring	1	36	-	Spring Pin	1
08	SU-C1022JNP08	Washer	1	37	-	Driver Blade	1
09	SU-C1022JNP09	Head Valve Piston	1	38	SU-C1022JNP38	Spacer	1
10	SU-C1022JNP10	Piston Stopper	1	39	SU-C1022JNP39	Driver Guide	1
11	SU-C1022JNT11	O-Ring (2PCS)	1set	40	SU-C1022JNP40	Click Lever	1
12	SU-C1022JNP12	O-Ring	1	41	SU-C1022JNP41	Torsion Spring	1
13	SU-C1022JNP13	Collar	1	42	SU-C1022JNP42	Hex. Nut	1
14	SU-C1022JNP14	Cylinder	1	43	SU-C1022JNP43	Screw	1
15	SU-C1022JNP15	Bumper	1	44	SU-C1022JNP44	Step Pin	1
16	SU-C1022JNP16	O-Ring	1	45	SU-C1022JNT45	Screw (2PCS)	1set
17	SU-C1022JNP17	Pipe	1	46	SU-C1022JNP46	Upper MAG. Ass'y	1
18	SU-C1022JNP18	O-Ring	1	47	SU-C1022JNP47	Pusher	1
19	SU-C1022JNP19	Body	1	48	SU-C1022JNP48	Extension Spring	1
20	SU-C1022JNP20	Nozzle	1	49	SU-C1022JNP49	Nail Tank Ass'y	1
21	SU-C1022JNP21	Seal	1	50	SU-C1022JNT50	Cylinder Cap Set (05,06)	1set
22	SU-C1022JNP22	Trigger Valve Head	1	51	SU-C1022JNT51	Head Valve Piston Set (09,10,11,12)	1set
23	SU-C1022JNP23	Trigger Valve Stem	1	52	SU-C1022JNT52	Cylinder Set (11,14)	1set
24	SU-C1022JNP24	O-Ring	1	53	SU-C1022JNT53	Pipe Ass'y (17,18)	1set
25	SU-C1022JNP25	Trigger Valve Guide	1	54	SU-C1022JNT54	Trigger Valve Set (22,23,24,25,26)	1set
26	SU-C1022JNP26	O-Ring	1	55	SU-C1022JNT55	Piston Set (32,33,34,335,36,37)	1set
27	SU-C1022JNP27	Compression Spring	1	56	SU-C1022JNT56	Magazine Set (28,40-49)	1set
28	SU-C1022JNP28	E-Ring	1				



Air Nailer

Item No : SJ-1850F



# Part List Item No : SJ-1850F

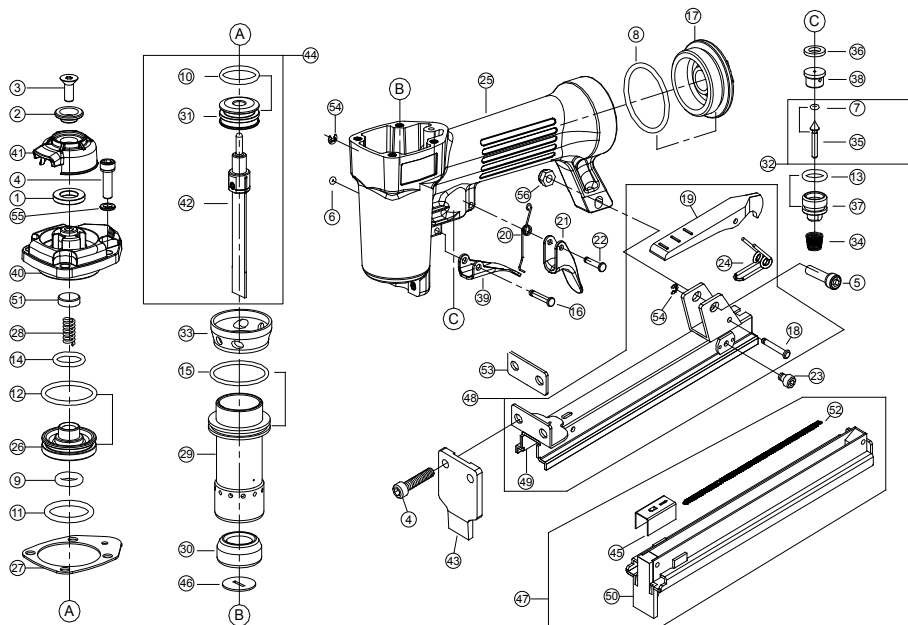
No.	Index No.	Description	Q'ty
1	SJ-1850FNP01	END CAP	1
2	SJ-1850FNP02	LATCH	1
3	SJ-1850FNP03	SUPPORT	1
4	SJ-1850FNP04	BAR	1
5	SJ-1850FNP05	SPRING	1
6	SJ-1850FNP06	COMPRESSION SPRING	1
7	SJ-1850FNP07	EXHAUST CAP	1
8	SJ-1850FNP08	MAGAZINE CAP	1
9	SJ-1850FNP09	MAGAZINE SEAT	1
10	SJ-1850FNP10	DRIVER ASSY.	1
11	SJ-1850FNP11	COVER PLATE(B)	1
12	SJ-1850FNP12	GUIDE PLATE	1
13	SJ-1850FNP13	MAGAZINE RETAINER	1
14	SJ-1850FNT14	PUSHER PIN (2PCS)	1 SET
15	SJ-1850FNT15	PUSHER SPRING (2PCS)	1 SET
16	SJ-1850FNP16	PUSHER	1
17	SJ-1850FNP17	STOP PLATE	1
18	SJ-1850FNP18	DRIVER SET	1
19	SJ-1850FNP19	COVER PLATE(A)	1
20	SJ-1850FNP20	BODY	1
21	SJ-1850FNP21	HEAD VALVE PISTON	1
22	SJ-1850FNP22	COMPRESSION SPRING	1
23	SJ-1850FNP23	PISTON STOP	1
24	SJ-1850FNP24	CAP SEAL	1
25	SJ-1850FNP25	COLLAR	1
26	SJ-1850FNP26	MAIN PISTON	1
27	SJ-1850FNP27	CYLINDER	1
28	SJ-1850FNP28	PIN	1
29	SJ-1850FNP29	BUMPER	1
30	SJ-1850FNP30	NOZZLE	1
31	SJ-1850FNP31	PISTON STOP	1
32	SJ-1850FNP32	PISTON STOP	1
33	SJ-1850FNP33	SAFETY(A)	1
34	SJ-1850FNP34	PIN	1
35	SJ-1850FNP35	CYLINDER CAP	1
36	SJ-1850FNP36	EXHAUST CAP RING	1
37	SJ-1850FNP37	FLAT HD.BOLT	1
38	SJ-1850FNT38	HEX.SOC.HD.BOLT (2PCS)	1 SET

No.	Index No.	Description	Q'ty
39	SJ-1850FNT39	HEX.SOC.HD.BOLT (2PCS)	1 SET
40	SJ-1850FNT40	HEX.SOC.HD.BOLT (2PCS)	1 SET
41	SJ-1850FNT41	HEX.SOC.HD.BOLT (4PCS)	1 SET
42	SJ-1850FNP42	HEX.SOC.HD.BOLT	1
43	SJ-1850FNT43	HEX.SOC.HD.BOLT (2PCS)	1 SET
44	SJ-1850FNT44	HEX.SOC.HD.BOLT (4PCS)	1 SET
45	SJ-1850FNT45	SPRING PIN (2PCS)	1 SET
46	SJ-1850FNT46	SPRING PIN (2PCS)	1 SET
47	SJ-1850FNP47	O-RING	1
48	SJ-1850FNP48	O-RING	1
49	SJ-1850FNP49	O-RING	1
50	SJ-1850FNP50	O-RING	1
51	SJ-1850FNP51	O-RING	1
52	SJ-1850FNP52	O-RING	1
53	SJ-1850FNP53	O-RING	1
54	SJ-1850FNP54	O-RING	1
55	SJ-1850FNP55	O-RING	1
56	SJ-1850FNP56	O-RING	1
57	SJ-1850FNP57	O-RING	1
58	SJ-1850FNP58	PIN	1
59	SJ-1850FNP59	SPACER	1
60	SJ-1850FNP60	TRIGGER	1
61	SJ-1850FNP61	CONTACT LEVER	1
62	SJ-1850FNP62	SAFETY(B)	1
63	SJ-1850FNP63	SHAFT	1
64	SJ-1850FNP64	TRIGGER ASSY.	1
65	SJ-1850FNP65	COMPRESSION SPRING	1
66	SJ-1850FNP66	TRIGGER VALVE ASSY.	1
67	SJ-1850FNP67	COMPRESSION SPRING	1
68	SJ-1850FNP68	TRIGGER VALVE STEM	1
69	SJ-1850FNP69	SEAL	1
70	SJ-1850FNP70	TRIGGER VALVE GUIDE	1
71	SJ-1850FNP71	TRIGGER VALVE SEAT	1
72	SJ-1850FNP72	E-RING	1
73	SJ-1850FNT73	E-RING (2PCS)	1 SET
74	SJ-1850FNT74	SPRING WASHER (2PCS)	1 SET
75	SJ-1850FNT75	SPRING WASHER (6PCS)	1 SET
76	SJ-1850FNP76	LOCK NUT	1
77	SJ-1850FNT77	LOCK NUT (2PCS)	1 SET



# Air Stapler

Item No : SU-8016



# Part List

Item No : SU-8016

No.	Index No.	Description	Q'ty	No.	Index No.	Description	Q'ty
1	SU-8016NP01	PISTON STOP	1	29	SU-8016NP29	CYLINDER	1
2	SU-8016NP02	EXHAUST CAP RING	1	30	SU-8016NP30	BUMPER	1
3	SU-8016NP03	FLAT HD.BOLT	1	31	SU-8016NP31	MAIN PISTON	1
4	SU-8016NT04	HEX.SOC.HD.BOLT (6PCS)	1 SET	32	SU-8016NP32	TRIGGER VALVE ASSY.	1
5	SU-8016NP05	HEX.SOC.HD.BOLT	1	33	SU-8016NP33	COLLAR	1
6	SU-8016NP06	O-RING	1	34	SU-8016NP34	COMPRESSION SPRING	1
7	SU-8016NP07	O-RING	1	35	SU-8016NP35	TRIGGER VALVE STEM	1
8	SU-8016NP08	O-RING	1	36	SU-8016NP36	SEAL	1
9	SU-8016NP09	O-RING	1	37	SU-8016NP37	TRIGGER VALVE GUIDE	1
10	SU-8016NP10	O-RING	1	38	SU-8016NP38	TRIGGER VALVE SEAT	1
11	SU-8016NP11	O-RING	1	39	SU-8016NP39	TRIGGER	1
12	SU-8016NP12	O-RING	1	40	SU-8016NP40	CYLINDER CAP	1
13	SU-8016NP13	O-RING	1	41	SU-8016NP41	EXHAUST CAP	1
14	SU-8016NP14	O-RING	1	42	SU-8016NP42	DRIVER SET	1
15	SU-8016NP15	O-RING	1	43	SU-8016NP43	COVER PLATE	1
16	SU-8016NP16	PIN	1	44	SU-8016NP44	DRIVER ASSY.	1
17	SU-8016NP17	END CAP	1	45	SU-8016NP45	PUSHER	1
18	SU-8016NP18	PIN	1	46	SU-8016NP46	NOZZLE	1
19	SU-8016NP19	LATCH	1	47	SU-8016NP47	MAGAZINE SEAT ASSY.	1
20	SU-8016NP20	SPRING	1	48	SU-8016NP48	MAGAZINE CAP ASSY.	1
21	SU-8016NP21	SAFETY LEVER	1	49	SU-8016NP49	MAGAZINE CAP SET	1
22	SU-8016NP22	PIN	1	50	SU-8016NP50	MAGAZINE SEAT SET	1
23	SU-8016NT23	RETAINER SCREW (2PCS)	1 SET	51	SU-8016NP51	PISTON STOP	1
24	SU-8016NP24	LATCH SPRING	1	52	SU-8016NP52	PULL SPRING	1
25	SU-8016NP25	BODY	1	53	SU-8016NP53	SPACER	1
26	SU-8016NP26	HEAD VALVE PISTON	1	54	SU-8016NT54	E-RING (2PCS)	1 SET
27	SU-8016NP27	CAP SEAL	1	55	SU-8016NT55	SPRING WASHER (4PCS)	1 SET
28	SU-8016NP28	COMPRESSION SPRING	1	56	SU-8016NP56	LOCK NUT	1





# Part List

Item No : SU-9025

No.	Index No.	Description	Q'ty
1	SU-9025NP01	END CAP	1
2	SU-9025NP02	EXHAUST CAP	1
3	SU-9025NP03	BODY	1
4	SU-9025NP04	HEAD VALVE PISTON	1
5	SU-9025NP05	COMPRESSION SPRING	1
6	SU-9025NP06	PISTON STOP	1
7	SU-9025NP07	CAP SEAL	1
8	SU-9025NP08	COLLAR	1
9	SU-9025NP09	MAIN PISTON	1
10	SU-9025NP10	PIN	1
11	SU-9025NP11	PISTON STOP	1
12	SU-9025NP12	PISTON STOP	1
13	SU-9025NT13	PIN (2PCS)	1 SET
14	SU-9025NP14	EXHAUST CAP RING	1
15	SU-9025NP15	CYLINDER CAP	1
16	SU-9025NP16	FLAT HD.BOLT	1
17	SU-9025NT17	HEX.SOC.HD.BOLT (2PCS)	1 SET
18	SU-9025NT18	HEX.SOC.HD.BOLT (4PCS)	1 SET
19	SU-9025NT19	HEX.SOC.HD.BOLT (3PCS)	1 SET
20	SU-9025NT20	SPRING PIN (2PCS)	1 SET
21	SU-9025NT21	O-RING (3PCS)	1 SET
22	SU-9025NP22	O-RING	1
23	SU-9025NP23	O-RING	1
24	SU-9025NP24	O-RING	1
25	SU-9025NP25	O-RING	1
26	SU-9025NP26	O-RING	1
27	SU-9025NP27	O-RING	1
28	SU-9025NP28	O-RING	1
29	SU-9025NP29	O-RING	1
30	SU-9025NP30	O-RING	1
31	SU-9025NP31	PIN	1
32	SU-9025NP32	CYLINDER	1
33	SU-9025NP33	BUMPER	1

No.	Index No.	Description	Q'ty
34	SU-9025NP34	LATCH	1
35	SU-9025NP35	LATCH SPRING	1
36	SU-9025NT36	RETAINER SCREW (2PCS)	1 SET
37	SU-9025NT37	GUIDE STEM (2PCS)	1 SET
38	SU-9025NT38	PUSHER SPRING (2PCS)	1 SET
39	SU-9025NT39	HEX.SOC.SET SCREW (2PCS)	1 SET
40	SU-9025NP40	NOZZLE	1
41	SU-9025NP41	COVER PLATE	1
42	SU-9025NP42	DRIVER ASSY.	1
43	SU-9025NP43	MAGAZINE SEAT SET	1
44	SU-9025NP44	MAGAZINE CAP SET	1
45	SU-9025NP45	MAGAZINE ASSY.	1
46	SU-9025NP46	DRIVER SET	1
47	SU-9025NP47	PUSHER	1
48	SU-9025NP48	TRIGGER	1
49	SU-9025NP49	CONTACT LEVER	1
50	SU-9025NP50	SAFETY(B)	1
51	SU-9025NP51	SHAFT	1
52	SU-9025NP52	SAFETY GUIDE	1
53	SU-9025NP53	UPPER SAFETY	1
54	SU-9025NP54	SPRING SHAFT	1
55	SU-9025NP55	TRIGGER ASSY.	1
56	SU-9025NP56	COMPRESSION SPRING	1
57	SU-9025NP57	COMPRESSION SPRING	1
58	SU-9025NP58	TRIGGER VALVE ASSY.	1
59	SU-9025NP59	COMPRESSION SPRING	1
60	SU-9025NP60	TRIGGER VALVE STEM	1
61	SU-9025NP61	SEAL	1
62	SU-9025NP62	TRIGGER VALVE GUIDE	1
63	SU-9025NP63	TRIGGER VALVE SEAT	1
64	SU-9025NP64	SPACER	1
65	SU-9025NT65	E-RING (2PCS)	1 SET
66	SU-9025NT66	SPRING WASHER (6PCS)	1 SET
67	SU-9025NP67	LOCK NUT	1



# Part List

Item No : SU-9040

No.	Index No.	Description	Q't	No.	Index No.	Description	Q't
1	SU-9040NP01	END CAP	1	42	SU-9040NP42	O-RING	1
2	SU-9040NP02	PISTON STOP	1	43	SU-9040NP43	O-RING	1
3	SU-9040NP03	PISTON STOP	1	44	SU-9040NP44	O-RING	1
4	SU-9040NP04	HEAD VALVE CAP	1	45	SU-9040NT45	O-RING (3PCS)	1set
5	SU-9040NP05	COMPRESSION SPRING	1	46	SU-9040NT46	O-RING (2PCS)	1set
6	SU-9040NP06	TRIGGER VALVE CAP	1	47	SU-9040NP47	O-RING	1
7	SU-9040NP07	COMPRESSION SPRING	1	48	SU-9040NT48	O-RING (2PCS)	1set
8	SU-9040NP08	TRIGGER ASSY.	1	49	SU-9040NP49	O-RING	1
9	SU-9040NP09	TRIGGER VALVE SEAT	1	50	SU-9040NP50	O-RING	1
10	SU-9040NP10	TRIGGER	1	51	SU-9040NP51	SPACER	1
11	SU-9040NP11	CONTACT LEVER	1	52	SU-9040NP52	COVER PLATE(A)	1
12	SU-9040NP12	ROLLER	1	53	SU-9040NP53	DRIVER	1
13	SU-9040NP13	COMPRESSION SPRING	1	54	SU-9040NP54	DRIVER ASSY.	1
14	SU-9040NP14	BODY	1	55	SU-9040NP55	GUIDE PLATE	1
15	SU-9040NP15	CYLINDER CAP	1	56	SU-9040NP56	MAGAZINE SEAT	1
16	SU-9040NP16	CAP SEAL	1	57	SU-9040NP57	COVER MAGAZINE	1
17	SU-9040NP17	HEAD VALVE SEAT	1	58	SU-9040NP58	PUSHER	1
18	SU-9040NP18	GASKET	1	59	SU-9040NP59	LATCH STUD BUSHING	1
19	SU-9040NP19	CYLINDER	1	60	SU-9040NP60	STOP PIN	1
20	SU-9040NP20	BUMPER	1	61	SU-9040NP61	COMPRESSION SPRING	1
21	SU-9040NP21	MAIN PISTON	1	62	SU-9040NP62	PULL SPRING	1
22	SU-9040NP22	COLLAR	1	63	SU-9040NP63	PUSHER SPRING ANCHOR	1
23	SU-9040NP23	EXHAUST CAP	1	64	SU-9040NP64	ROLLER SET	1
24	SU-9040NP24	TRIGGER VALVE ASSY.	1	65	SU-9040NP65	ROLLER	1
25	SU-9040NP25	EXHAUST CAP RING	1	66	SU-9040NP66	ROLLER ANCHOR	1
26	SU-9040NP26	TRIGGER VALVE STEM	1	67	SU-9040NP67	DISTANCE SHAFT	1
27	SU-9040NP27	FLAT HD.BOLT	1	68	SU-9040NP68	PIVOT	1
28	SU-9040NP28	HEX.SOC.HD.BOLT	1	69	SU-9040NP69	COMPRESSION SPRING	1
29	SU-9040NT29	HEX.SOC.HD.BOLT (2PCS)	1set	70	SU-9040NP70	SUPPORT	1
30	SU-9040NT30	HEX.SOC.HD.BOLT (3PCS)	1set	71	SU-9040NP71	UPPER SAFETY	1
31	SU-9040NP31	HEX.SOC.HD.BOLT	1	72	SU-9040NP72	UPPER RAIL	1
32	SU-9040NT32	HEX.SOC.HD.BOLT (2PCS)	1set	73	SU-9040NP73	SPRING	1
33	SU-9040NT33	HEX.SOC.HD.BOLT (2PCS)	1set	74	SU-9040NP74	COVER PLATE(B)	1
34	SU-9040NT34	HEX.SOC.HD.BOLT (2PCS)	1set	75	SU-9040NP75	NOZZLE	1
35	SU-9040NT35	HEX.SOC.HD.BOLT (4PCS)	1set	76	SU-9040NP76	C-RING	1
36	SU-9040NT36	HEX.SOC.HD.BOLT (2PCS)	1set	77	SU-9040NP77	E-RING	1
37	SU-9040NP37	BUTTON HD.BOLT	1	78	SU-9040NT78	SPRING WASHER (4PCS)	1set
38	SU-9040NP38	SPRING PIN	1	79	SU-9040NT79	SPRING WASHER (2PCS)	1set
39	SU-9040NP39	SPRING PIN	1	80	SU-9040NP80	LOCK NUT	1
40	SU-9040NP40	SPRING PIN	1	81	SU-9040NT81	LOCK NUT (2PCS)	1set
41	SU-9040NP41	O-RING	1	82	SU-9040NT82	FLAT WASHER (2PCS)	1set



# Part List

Item No : SJ-CN55

No.	Index No.	Description	Q'ty
1	SJ-CN55P01	DOOR LATCH	1
2	SJ-CN55P02	GROMMET	1
3	SJ-CN55P03	CYLINDER RING	1
4	SJ-CN55P04	CHECK SEAL	1
5	SJ-CN55P05	COMPRESSION SPRING	1
6	SJ-CN55P06	SPRING	1
7	SJ-CN55P07	PIN	1
8	SJ-CN55P08	PIN	1
9	SJ-CN55P09	FIXED LUMP	1
10	SJ-CN55T10	SPRING RECEIVER (2 PCS)	1 SET
11	SJ-CN55T11	WEAR PLATE (2 PCS)	1 SET
12	SJ-CN55T12	BUSHING (4 PCS)	1 SET
13	SJ-CN55P13	RETAINER POST	1
14	SJ-CN55P14	COMPRESSION SPRING	1
15	SJ-CN55P15	PULL SPRING	1
16	SJ-CN55P16	DRIVER ASSY.	1
17	SJ-CN55P17	NOSE	1
18	SJ-CN55P18	DOOR	1
19	SJ-CN55P19	HOLDING PAWL	1
20	SJ-CN55P20	FEED PAWL	1
21	SJ-CN55P21	CANISTER COVER	1
22	SJ-CN55P22	CANISTER	1
23	SJ-CN55P23	FEED PISTON CAP	1
24	SJ-CN55P24	SAFETY	1
25	SJ-CN55P25	TRIP COVER	1
26	SJ-CN55P26	PIN	1
27	SJ-CN55P27	PISTON BUMPER	1
28	SJ-CN55P28	FEED PISTON CAP	1
29	SJ-CN55P29	PIN	1
30	SJ-CN55P30	MAGAZINE POST	1
31	SJ-CN55P31	COMPRESSION SPRING	1
32	SJ-CN55P32	CYLINDER	1
33	SJ-CN55P33	HEAD VALVE PISTON	1
34	SJ-CN55P34	BUMPER	1
35	SJ-CN55P35	MAIN PISTON	1
36	SJ-CN55P36	DRIVER	1
37	SJ-CN55P37	PISTON STOP	1
38	SJ-CN55P38	CYLINDER RING	1
39	SJ-CN55P39	PISTON STOP RING	1
40	SJ-CN55P40	TRIP COVER	1
41	SJ-CN55P41	CAP SEAL	1
42	SJ-CN55P42	FIXED SEAT	1
43	SJ-CN55P43	CYLINDER CAP	1
44	SJ-CN55P44	EXHAUST CAP	1
45	SJ-CN55P45	SILENCER PLATE	1
46	SJ-CN55P46	EXHAUST CAP RING	1

No.	Index No.	Description	Q'ty
47	SJ-CN55P47	SKIDPROOF RING	1
48	SJ-CN55P48	DUST SHIELD	1
49	SJ-CN55P49	BODY	1
50	SJ-CN55P50	INNER SAFETY GUIDE	1
51	SJ-CN55P51	OUTER SAFETY GUIDE	1
52	SJ-CN55P52	COMPRESSION SPRING	1
53	SJ-CN55P53	COMPRESSION SPRING	1
54	SJ-CN55P54	PIN	1
55	SJ-CN55P55	COMPRESSION SPRING	1
56	SJ-CN55P56	FLAT HD.BOLT	1
57	SJ-CN55P57	HEX.SOC.SET SCREW	1
58	SJ-CN55T58	HEX.SOC.HD.BOLT (4 PCS)	1 SET
59	SJ-CN55T59	HEX.SOC.HD.BOLT (4 PCS)	1 SET
60	SJ-CN55T60	HEX.SOC.HD.BOLT (2 PCS)	1 SET
61	SJ-CN55T61	PARALLEL PIN (2 PCS)	1 SET
62	SJ-CN55P62	SPRING PIN	1
63	SJ-CN55T63	SPRING PIN (2 PCS)	1 SET
64	SJ-CN55T64	SPRING PIN (3 PCS)	1 SET
65	SJ-CN55T65	SPRING PIN (2 PCS)	1 SET
66	SJ-CN55P66	O-RING	1
67	SJ-CN55P67	O-RING	1
68	SJ-CN55P68	O-RING	1
69	SJ-CN55T69	O-RING (2 PCS)	1 SET
70	SJ-CN55T70	O-RING (2 PCS)	1 SET
71	SJ-CN55P71	O-RING	1
72	SJ-CN55P72	O-RING	1
73	SJ-CN55P73	O-RING	1
74	SJ-CN55P74	O-RING	1
75	SJ-CN55P75	O-RING	1
76	SJ-CN55P76	O-RING	1
77	SJ-CN55P77	O-RING	1
78	SJ-CN55P78	O-RING	1
79	SJ-CN55T79	O-RING (2 PCS)	1 SET
80	SJ-CN55P80	O-RING	1
81	SJ-CN55P81	RESTRICTIVE TRIGGER ASSY.	1
82	SJ-CN55P82	TRIGGER ASSY.	1
83	SJ-CN55P83	PILOT VALVE	1
84	SJ-CN55P84	TRIGGER VALVE STEM	1
85	SJ-CN55P85	TRIGGER VALVE SEAT	1
86	SJ-CN55P86	TRIGGER VALVE SEAT	1
87	SJ-CN55P87	COMPRESSION SPRING	1
88	SJ-CN55P88	CONTACT LEVER	1
89	SJ-CN55P89	TRIGGER	1
90	SJ-CN55P90	C-RING	1
91	SJ-CN55T91	LOCK NUT (2 PCS)	1 SET
92	SJ-CN55T92	FLAT WASHER (3 PCS)	1 SET



# Part List

Item No : SJ-CN70

No.	Index No.	Description	Q'ty
1	SJ-CN70P01	DOOR LATCH	1
2	SJ-CN70P02	DRIVER ASSY.	1
3	SJ-CN70P03	NOSE	1
4	SJ-CN70P04	DOOR	1
5	SJ-CN70P05	HOLDING PAWL	1
6	SJ-CN70P06	FEED PAWL	1
7	SJ-CN70P07	PIN	1
8	SJ-CN70P08	COMPRESSION SPRING	1
9	SJ-CN70P09	FEED PISTON CAP	1
10	SJ-CN70P10	PISTON BUMPER	1
11	SJ-CN70P11	FEED PISTON CAP	1
12	SJ-CN70P12	PIN	1
13	SJ-CN70P13	PIN CAP	1
14	SJ-CN70P14	SPRING	1
15	SJ-CN70P15	PIN	1
16	SJ-CN70P16	COMPRESSION SPRING	1
17	SJ-CN70P17	BOTTOM BUMPER	1
18	SJ-CN70P18	TOP BUMPER	1
19	SJ-CN70P19	CYLINDER	1
20	SJ-CN70P20	CYLINDER RING	1
21	SJ-CN70P21	CYLINDER RING	1
22	SJ-CN70P22	MAIN PISTON	1
23	SJ-CN70P23	DRIVER	1
24	SJ-CN70P24	HEAD VALVE PISTON	1
25	SJ-CN70P25	COMPRESSION SPRING	1
26	SJ-CN70P26	PISTON STOP	1
27	SJ-CN70P27	BODY	1
28	SJ-CN70P28	CYLINDER CAP	1
29	SJ-CN70P29	CANISTER	1
30	SJ-CN70P30	CANISTER COVER	1
31	SJ-CN70P31	CAP SEAL	1
32	SJ-CN70P32	TRIP COVER	1
33	SJ-CN70P33	PIN	1
34	SJ-CN70T34	RUBBER PLATE (2PCS)	1 SET
35	SJ-CN70P35	MAGAZINE POST	1
36	SJ-CN70P36	C-RING	1
37	SJ-CN70P37	FIXED SEAT	1
38	SJ-CN70P38	SAFETY GUIDE	1
39	SJ-CN70P39	SAFETY	1
40	SJ-CN70P40	FIXED LUMP	1
41	SJ-CN70P41	DUST SHIELD	1
42	SJ-CN70P42	TRIP COVER	1
43	SJ-CN70P43	GROMMET	1


No.	Index No.	Description	Q'ty
44	SJ-CN70P44	COMPRESSION SPRING	1
45	SJ-CN70P45	COLLAR	1
46	SJ-CN70T46	SPRING RECEIVER (2PCS)	1 SET
47	SJ-CN70T47	BUSHING (3PCS)	1 SET
48	SJ-CN70P48	COMPRESSION SPRING	1
49	SJ-CN70P49	PULL SPRING	1
50	SJ-CN70P50	HEX.SOC.SET SCREW	1
51	SJ-CN70T51	HEX.SOC.HD.BOLT (4PCS)	1 SET
52	SJ-CN70P52	HEX.SOC.HD.BOLT	1
53	SJ-CN70P53	HEX.SOC.HD.BOLT	1
54	SJ-CN70T54	HEX.SOC.HD.BOLT (4PCS)	1 SET
55	SJ-CN70T55	PARALLEL PIN (2PCS)	1 SET
56	SJ-CN70P56	SPRING PIN	1
57	SJ-CN70T57	SPRING PIN (2PCS)	1 SET
58	SJ-CN70T58	SPRING PIN (4PCS)	1 SET
59	SJ-CN70P59	SPRING PIN	1
60	SJ-CN70P60	O-RING	1
61	SJ-CN70T61	O-RING (2PCS)	1 SET
62	SJ-CN70P62	O-RING	1
63	SJ-CN70P63	O-RING	1
64	SJ-CN70P64	O-RING	1
65	SJ-CN70T65	O-RING (3PCS)	1 SET
66	SJ-CN70P66	O-RING	1
67	SJ-CN70P67	O-RING	1
68	SJ-CN70P68	O-RING	1
69	SJ-CN70P69	O-RING	1
70	SJ-CN70P70	O-RING	1
71	SJ-CN70P71	O-RING	1
72	SJ-CN70P72	O-RING	1
73	SJ-CN70P73	O-RING	1
74	SJ-CN70P74	O-RING	1
75	SJ-CN70P75	RESTRICTIVE TRIGGER ASSY.	1
76	SJ-CN70P76	TRIGGER ASSY.	1
77	SJ-CN70P77	PILOT VALVE	1
78	SJ-CN70P78	TRIGGER VALVE STEM	1
79	SJ-CN70P79	TRIGGER VALVE SEAT	1
80	SJ-CN70P80	TRIGGER VALVE SEAT	1
81	SJ-CN70P81	COMPRESSION SPRING	1
82	SJ-CN70P82	CONTACT LEVER	1
83	SJ-CN70P83	TRIGGER	1
84	SJ-CN70P84	GROMMET	1
85	SJ-CN70P85	C-RING	1
86	SJ-CN70T86	LOCK NUT (2PCS)	1 SET

# Warranty Card

## Manufacturer's limited warranty

**Mighty Seven International CO., LTD.** offers limited warranty to the products manufactured by **Mighty Seven** and sold by its worldwide authorized dealers. The limited warranty only applies to products that are defective in material and workmanship and does not apply to products which have been abused, misused, modified, or repaired by someone other than **Mighty Seven** or its authorized service representatives. If there is a defective product of **Mighty Seven**, please send it prepaid to the dealer where it was purchased from along with address and contact information. Repairs or replacements are warranted as described above; otherwise, the service of repairs or replacements will be charged.

Please Keep This card For Warranty

Date of Purchase :	Model No. :
Warranty Expiration Date :	Serial No. :
<b>Distributor Stamp</b>          	





For Distributor

## Warranty Card

Date of Purchase :	Model No. :										
Warranty Expiration Date :	Serial No. :										
Name :											
Company Name :											
Address :											
Tel. :	Fax. :										
E-mail :											
<b>Type of Business :</b> <table border="0"><tr><td><input type="checkbox"/> Agriculture</td><td><input type="checkbox"/> Paint &amp; Body Repair</td></tr><tr><td><input type="checkbox"/> General Auto Repair</td><td><input type="checkbox"/> Public Work/Gov. Utilities</td></tr><tr><td><input type="checkbox"/> Tire</td><td><input type="checkbox"/> Factory</td></tr><tr><td><input type="checkbox"/> Truck Maintenance/Repair</td><td><input type="checkbox"/> Home Use</td></tr><tr><td><input type="checkbox"/> Car Maker</td><td><input type="checkbox"/> Other _____</td></tr></table>		<input type="checkbox"/> Agriculture	<input type="checkbox"/> Paint & Body Repair	<input type="checkbox"/> General Auto Repair	<input type="checkbox"/> Public Work/Gov. Utilities	<input type="checkbox"/> Tire	<input type="checkbox"/> Factory	<input type="checkbox"/> Truck Maintenance/Repair	<input type="checkbox"/> Home Use	<input type="checkbox"/> Car Maker	<input type="checkbox"/> Other _____
<input type="checkbox"/> Agriculture	<input type="checkbox"/> Paint & Body Repair										
<input type="checkbox"/> General Auto Repair	<input type="checkbox"/> Public Work/Gov. Utilities										
<input type="checkbox"/> Tire	<input type="checkbox"/> Factory										
<input type="checkbox"/> Truck Maintenance/Repair	<input type="checkbox"/> Home Use										
<input type="checkbox"/> Car Maker	<input type="checkbox"/> Other _____										
<b>Specification of compressor used :</b> <table border="0"><tr><td><b>Horsepower :</b> <input type="checkbox"/> 5    <input type="checkbox"/> 7,5    <input type="checkbox"/> 10    <input type="checkbox"/> 15+ <input type="checkbox"/> other _____</td><td><b>Tank Size (liter/gal) :</b> <input type="checkbox"/> 75,7(20) <input type="checkbox"/> 227,1(60) <input type="checkbox"/> 302,8(80) <input type="checkbox"/> 454,2(120) <input type="checkbox"/> other _____</td></tr></table>		<b>Horsepower :</b> <input type="checkbox"/> 5 <input type="checkbox"/> 7,5 <input type="checkbox"/> 10 <input type="checkbox"/> 15+ <input type="checkbox"/> other _____	<b>Tank Size (liter/gal) :</b> <input type="checkbox"/> 75,7(20) <input type="checkbox"/> 227,1(60) <input type="checkbox"/> 302,8(80) <input type="checkbox"/> 454,2(120) <input type="checkbox"/> other _____								
<b>Horsepower :</b> <input type="checkbox"/> 5 <input type="checkbox"/> 7,5 <input type="checkbox"/> 10 <input type="checkbox"/> 15+ <input type="checkbox"/> other _____	<b>Tank Size (liter/gal) :</b> <input type="checkbox"/> 75,7(20) <input type="checkbox"/> 227,1(60) <input type="checkbox"/> 302,8(80) <input type="checkbox"/> 454,2(120) <input type="checkbox"/> other _____										

## 保固卡

镁迪企业股份有限公司提供有限的产品保固, 范围仅限定由镁迪公司所生产制造, 并透过其全球各大合格经销商推广销售, 若因材质因素或制程瑕疵而导致缺陷之产品。反之, 若因不当使用、误用、自行拆卸、修改, 或非经由由镁迪所授权之服务人员维修, 而造成产品故障或损伤, 则不在保固范围之列。

如果发现镁迪公司产品在保固范围内有上述缺陷, 请将产品连同地址、联络信息、购买发票及运费等, 送回原购买的经销商处进行维修。保固范围以外的所有维修或零件更换等需求, 经销商或服务据点得依实际维修内容收取相关费用。

请妥善保存此保固卡。

购买日:	产品型号:
保固有效期:	产品序号:
经销商章	
	



经销商留存

## 保固卡

销售日:	产品型号:																
保固有效期:	产品序号:																
姓名:																	
公司名称:																	
地址:																	
电话:	传真:																
电邮:																	
<p>通路别:</p> <table border="0"><tr><td><input type="checkbox"/> 农业机械</td><td><input type="checkbox"/> 车体烤漆&amp;维修</td></tr><tr><td><input type="checkbox"/> 一般汽车维修</td><td><input type="checkbox"/> 公共工程/ 政府公共事业</td></tr><tr><td><input type="checkbox"/> 轮胎</td><td><input type="checkbox"/> 工厂</td></tr><tr><td><input type="checkbox"/> 卡车维修</td><td><input type="checkbox"/> 居家修缮</td></tr><tr><td><input type="checkbox"/> 汽车制造</td><td><input type="checkbox"/> 其它 _____</td></tr></table>		<input type="checkbox"/> 农业机械	<input type="checkbox"/> 车体烤漆&维修	<input type="checkbox"/> 一般汽车维修	<input type="checkbox"/> 公共工程/ 政府公共事业	<input type="checkbox"/> 轮胎	<input type="checkbox"/> 工厂	<input type="checkbox"/> 卡车维修	<input type="checkbox"/> 居家修缮	<input type="checkbox"/> 汽车制造	<input type="checkbox"/> 其它 _____						
<input type="checkbox"/> 农业机械	<input type="checkbox"/> 车体烤漆&维修																
<input type="checkbox"/> 一般汽车维修	<input type="checkbox"/> 公共工程/ 政府公共事业																
<input type="checkbox"/> 轮胎	<input type="checkbox"/> 工厂																
<input type="checkbox"/> 卡车维修	<input type="checkbox"/> 居家修缮																
<input type="checkbox"/> 汽车制造	<input type="checkbox"/> 其它 _____																
<p>所使用的空压机规格:</p> <p>马力</p> <table border="0"><tr><td><input type="checkbox"/> 5</td><td><input type="checkbox"/> 7.5</td><td><input type="checkbox"/> 10</td><td><input type="checkbox"/> 15+</td></tr><tr><td colspan="4"><input type="checkbox"/> 其它 _____</td></tr></table> <p>贮气槽 (gal):</p> <table border="0"><tr><td><input type="checkbox"/> 20</td><td><input type="checkbox"/> 60</td><td><input type="checkbox"/> 80</td><td><input type="checkbox"/> 120</td></tr><tr><td colspan="4"><input type="checkbox"/> 其它 _____</td></tr></table>		<input type="checkbox"/> 5	<input type="checkbox"/> 7.5	<input type="checkbox"/> 10	<input type="checkbox"/> 15+	<input type="checkbox"/> 其它 _____				<input type="checkbox"/> 20	<input type="checkbox"/> 60	<input type="checkbox"/> 80	<input type="checkbox"/> 120	<input type="checkbox"/> 其它 _____			
<input type="checkbox"/> 5	<input type="checkbox"/> 7.5	<input type="checkbox"/> 10	<input type="checkbox"/> 15+														
<input type="checkbox"/> 其它 _____																	
<input type="checkbox"/> 20	<input type="checkbox"/> 60	<input type="checkbox"/> 80	<input type="checkbox"/> 120														
<input type="checkbox"/> 其它 _____																	

