



MIGHTY SEVEN
Complete air tool solutions

REPAIR TOOLS



REPAIR TOOLS



ZW-0101

Front Housing Opener
(Left-handed thread component)
Applicable to the part : RA-102P01



ZW-0102

Front Housing Opener
(Left-handed thread component)
Applicable to the part : RA-101P01



ZW-0103

Nut Dismantling Wrench
(Left-handed thread component)
Applicable to the part : RA-101P13, RA-102P13



ZW-0104

Nut Dismantling Wrench
(Left-handed thread component)
Applicable to the part : RA-105P18, RA-201P19



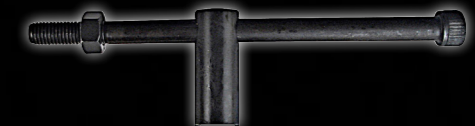
ZW-0105

Retainer Ring Holder
Applicable to the part : RA-101P03, RA-102P03
RA-105P01, RA-201P09



ZW-0201

Clamp Nut Wrench
Applicable to the part :
QE-631P34 , QB-721P37 , QA-621P34 ,
QA-611P34 , QB-612P37



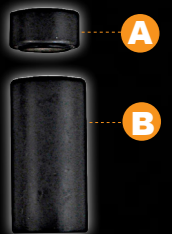
ZW-0202

Throttle Valve Plug Wrench
Applicable to the part :
QA-121P01 , QA-111P10 , QA-221P01
QA-211P11 , QA-321P01 , QA-311P10
QA-323P01 , QA-313P10 , QA-325P01
QA-315P10 , QA-621P01 , QA-611P10
QB-612P01 , QE-631P01 , QC-223P01
QC-213P11 , QB-721P01



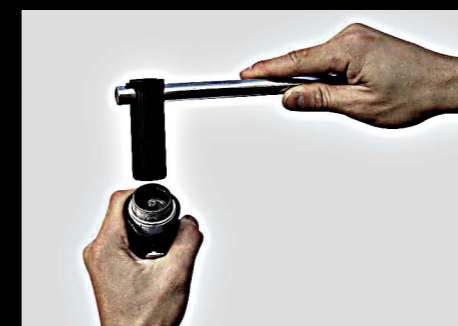
ZW-0203

Bearing Pressing Set
Applicable to the part :
QA-121P15+P25 , QA-111P16+P26
QA-321P15+P25 , QA-311P16+P25
QA-323P15+P25 , QA-313P16+P25
QA-325P15+P25 , QA-315P16+P25
QA-621P15+P25 , QA-611P16+P25
QB-612P15+P25 , QG-202P13+P20
QB-721P15+P25 , QE-631P15+P25
QG-102P16+P24 , QG-103P16+P24



ZW-0301

Internal Gear Wrench
Applicable to the part :
NE-321P45 , NE-332P42 , NE-421P45
NE-432P42 , QG-103P26



ZW-0302

Internal Gear Wrench
Applicable to the part :
NE-211P22 , NE-311P22





ZW-0303

Rotor Governor holder
Applicable to the part :
QB-104T01 , QB-105T01
QB-114T03 , QB-115T03



ZW-0304

Locking Ring Wrench
Applicable to the part :
QB-104P31 , QB-105P31
QB-114P65 , QB-115P65



ZW-0306

Combination Wrench For
Lock Ring And Bearing
Applicable to the part :
QB-41P13 , QB-41P20 , QB-42P13
QB-42P20 , QB-43P13 , QB-43P20



ZW-0310

Bearing Pressing Set
Applicable to the part :
NE-321P18 , NE-321P29 , NE-332P11
NE-332P18 , NE-421P18 , NE-421P29
NE-432P11 , NE-432P18



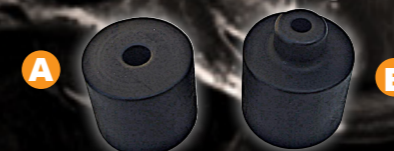
ZW-0308

Ratchet Housing Holder
Applicable to the part :
NE-211P26 , NE-311P26



ZW-0313

Bearing Pressing Set
Applicable to the part :
QG-102P16 , QG-102P24 , QG-202P13
QG-202P20 , NE-211P14 , NE-211P20
NE-311P14 , NE-311P20



ZW-0315

Bearing Pressing Set
Applicable to the part :
QB-104P50 , QB-105P50
QB-114P50 , QB-115P50



ZW-0316

Arbor Bearing Cap Wrench
Applicable to the part :
QB-107P10 , QB-117P10



ZW-0501

Reverse Bushing Assembling Tool
Applicable to the part :
QE-331P26 , QE-341P28 , QE-403P26
QE-343P28 , QE-231P14



REPAIR TOOLS

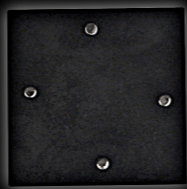


REPAIR TOOLS



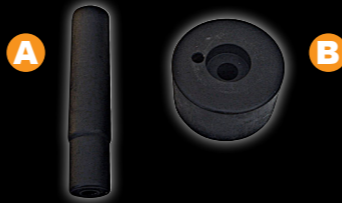
ZW-0503

Cap Opener
Applicable to the part :
QB-311P23 , QB-312P23



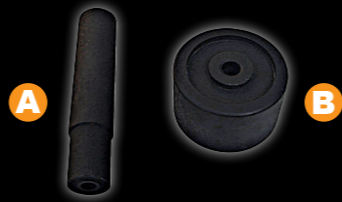
ZW-0504

Bearing Pressing Set
Applicable to the part :
QE-131P12 , QE-131P20 , QE-331P09
QE-342P15 , QE-333P09 , QE-334P07
QE-343P15 , QE-344P15 , QE-332P07



ZW-0505

Bearing Pressing Set
Applicable to the part :
QG-101P16 , QG-101P23 , QG-201P07



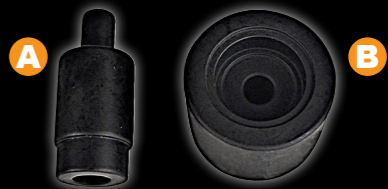
ZW-0506

Gear Housing Opener
Applicable to the part :
QE-131P28



ZW-0508

Bearing Pressing Set
Applicable to the part :
QB-52P14 , QB-53P14 , QB-311P19
QB-311P24 , QB-312P19 , QB-312P24



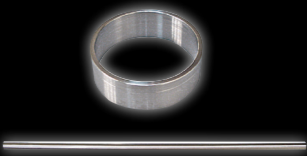
ZW-0701

Cap Assembling Tool
Applicable to the part :
SC series parts P01



ZW-0801

Motor Assembling Kit
Applicable to the part :
NC-4214P23 , NC-4224P23 , NC-4217P23
NC-4227P23 , NC-4517P22



ZW-0401

Motor Housing Opener Set
Applicable to the part :
QB-45602P14 , QB-45602P34 , QB-46502P14
QB-46502P34 , QB-46602P14 , QB-46602P34
QB-47602P14 , QB-47602P34

