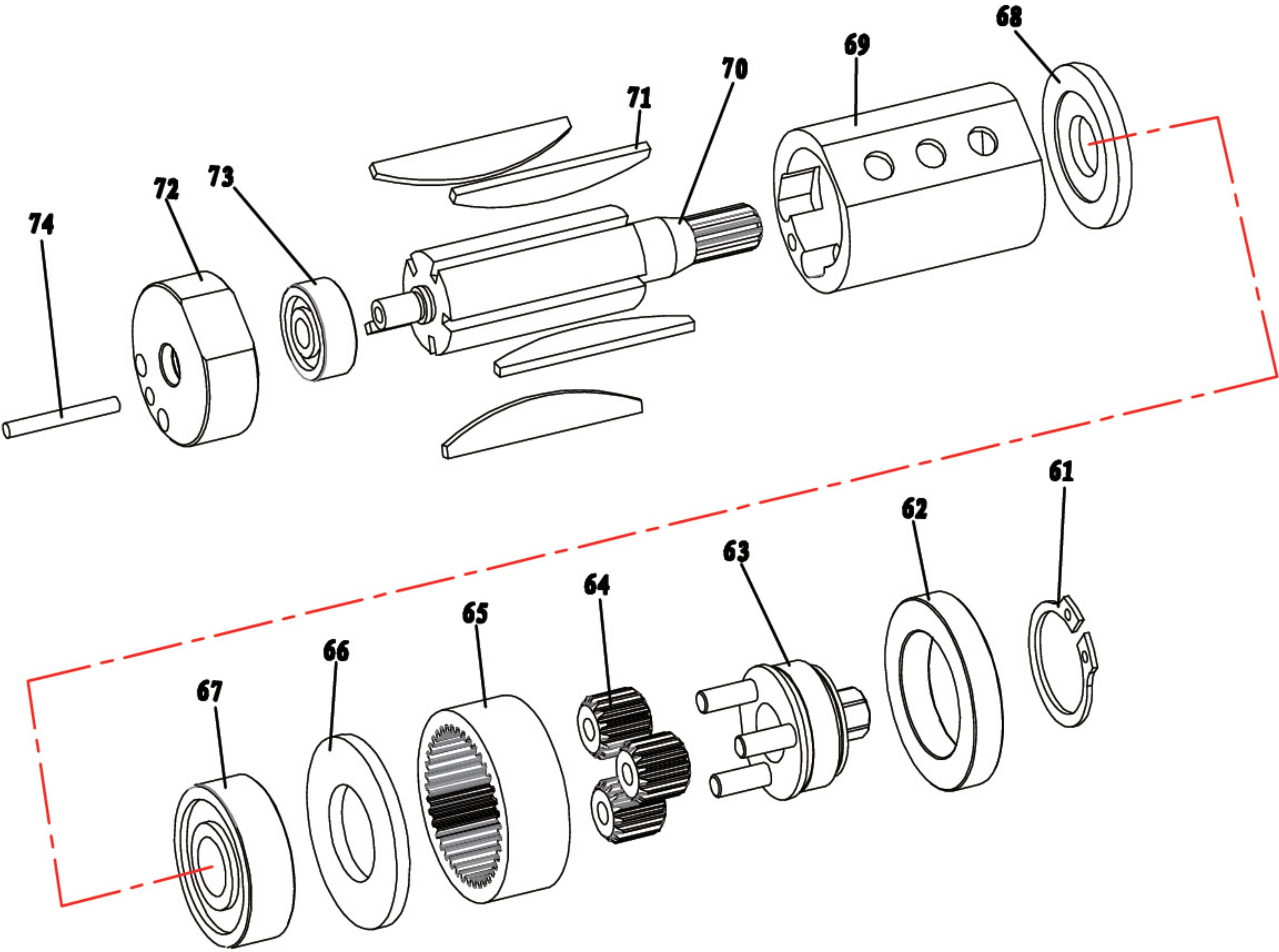




Air Hydraulic Nut Setter
Item No : PB-2601

● The consumable parts ▲ The replacement parts ★ The non-replacement parts



Part List

Item No : PB-2601



		INDEX NO.	DESCRIPTION	Q'TY
★	61	PB-2601P61	Circlip	1
▲	62	PB-2601P62	Bearing	1
▲	63	PB-2601P63	Planet Gear Sprindle	1
▲	64	PB-2601T64	Planet (3 pcs)	1 SET
★	65	PB-2601P65	Planet Gear	1
★	66	PB-2601P66	Spacer	1
▲	67	PB-2601P67	Bearing	1
★	68	PB-2601P68	Front End Plante	1
★	69	PB-2601P69	Stator	1
▲	70	PB-2601P70	Rotor	1
●	71	PB-2601T71	Rotor Blade (5 pcs)	1 SET
★	72	PB-2601P72	Rear End Plate	1
▲	73	PB-2601P73	Bearing	1
★	74	PB-2601P74	Pin	1



This exploded view diagram illustrates the assembly of a 127cc engine. The central component is the engine block (1), which features a '127' marking. Various sub-assemblies are shown in their relative positions for assembly:

- Top End Assembly:** Includes the cylinder head (87), piston and connecting rod (86), and the crankshaft (80) with its associated bearings and seals.
- Valvetrain:** Shows the intake and exhaust valves (93, 94) with their springs (91B, 100) and retainers.
- Bottom End Assembly:** Includes the oil pan (2) and its gasket (103), as well as the crankshaft (3) and its supporting bearings (4, 5, 8, 9).
- Accessory Drive:** Shows the pulley (11) and its mounting hardware (10, 12, 13, 14, 15, 16).
- Other Components:** Includes the timing belt (25) and its tensioner (26), the water pump (27) with its pulley (29), and the cooling fan (30) with its pulley (31).

Each part is numbered for identification, and dashed lines indicate the assembly sequence and alignment of the components.

Part List

Item No : PB-2601



	NO.	INDEX NO.	DESCRIPTION	Q'TY		NO.	INDEX NO.	DESCRIPTION	Q'TY		NO.	INDEX NO.	DESCRIPTION	Q'TY		NO.	INDEX NO.	DESCRIPTION	Q'TY
★	1	PB-2601P01	Head & Handle	1	▲	33	PB-2601P33	O-ring	1	★	86	PB-2601P86	Rear Casing	1	★	104	PB-2601P104	Spring	1
★	2	PB-2601P02	Rubber Base	1	★	34	PB-2601P34	Silencer	1	★	87	PB-2601P87	Rear Casing Rubber Band	1	★	110	PB-2601P110	Washer	1
★	3	PB-2601P03	End Plug (Screwed)	1	▲	36	PB-2601T36	O-Ring (2 pcs)	1 SET	★	88	PB-2601P88	Stroke Set Finger	1	★	113	PB-2601P113	Deflector Assembly	1
▲	4	PB-2601P04	O-Ring	1	★	40	PB-2601T40	Screw (3 pcs)	1 SET	★	89	PB-2601T89	Spring (2 pcs)	1 SET	▲	114	PB-2601P114	Inlet Assmby	1
★	5	PB-2601P05	Piston Rod Fastening Bolt	1	★	41	PB-2601P41	O-Ring	1	★	91B	PB-2601P91B	Nose Casing	1	★	115	PB-2601P115	Spring	1
★	6	PB-2601P06	Stop Screw	1	★	42	PB-2601P42	Oil Pulg	1	▲	93	PB-2601P93A	Adaptor M3	1	★	117	PB-2601P117	Pin	1
★	7	PB-2601P07	O-Ring	1	★	43	PB-2601P43	Oil Seal Washer	1			PB-2601P93B	Adaptor M4	1	★	124	PB-2601P124	Spring Pin	1
▲	8	PB-2601P08	Lip Seal (Pneumatic Piston)	1	★	44B	PB-2601P44B	Spindle	1			PB-2601P93C	Adaptor M5	1	★	129	PB-2601P129	Screw	1
★	9	PB-2601P09	Pneumatic Piston	1	★	45	PB-2601P45	Lock Nut	1			PB-2601P93D	Adaptor M6	1					
★	10	PB-2601P10	Piston Rod (Intensifier)	1	★	46	PB-2601P46	Return Sping Locknut	1			PB-2601P93E	Adaptor M8	1					
★	11	PB-2601P11	Spring	1	★	47	PB-2601P47	Return Spring	1	▲	94	PB-2601P93F	Adaptor M10	1					
★	12	PB-2601P12	Air Supply Tube	1	▲	51	PB-2601P51	Front Seal	1			PB-2601P93G	Adaptor M12	1					
★	13	PB-2601P13	Lock Nut	1	★	52	PB-2601P52	Circlip	1			PB-2601P94A	Adaptor Nut M3	1					
▲	14	PB-2601P14	Seal	1	▲	53	PB-2601P53	Seal	1			PB-2601P94B	Adaptor Nut M4	1					
★	15	PB-2601P15	Rod Guide	1	★	54	PB-2601P54	Hydraulic Piston	1			PB-2601P94C	Adaptor Nut M5	1					
▲	16	PB-2601P16	O-Ring	1	★	55	PB-2601P55	Shim Adjustment Ring	1	★	95	PB-2601P94D	Adaptor Nut M6	1					
★	17	PB-2601P17	Plug	1	★	56	PB-2601P56	Movement Pivot	1			PB-2601P94E	Adaptor Nut M8	1					
★	18	PB-2601P18	Lip Seal	1	★	57	PB-2601P57	Stroke Stop	1			PB-2601P94F	Adaptor Nut M10	1					
★	19	PB-2601P19	Guide	1	★	58	PB-2601T58	Screw (4 pcs)	1 SET			PB-2601P94G	Adaptor Nut M12	1					
★	20	PB-2601P20	Trigger Rod	1	★	59	PB-2601T59	Motor Air Supply Tube (2 pcs)	1 SET			PB-2601P95	Bridge Washer	1					
★	21	PB-2601P21	O-Ring	1	▲	60	PB-2601T60	O-Ring (4 pcs)	1 SET	▲	98	PB-2601P98	O-Ring	1					
★	22	PB-2601P22	Pin	1	★	75	PB-2601P75	Rear End Plate	1	★	99	PB-2601P99	Washer	1					
★	23	PB-2601P23	Roller	1	▲	76	PB-2601P76	O-Ring	1	●	100	PB-2601P100A	Screw Mandrel M3	1					
★	24	PB-2601P24	Push Wedge	1	▲	77	PB-2601T77	O-Ring (5 pcs)	1 SET			PB-2601P100B	Screw Mandrel M4	1					
★	25	PB-2601P25	Trigger	1	★	78	PB-2601P78	Push Rod	1			PB-2601P100C	Screw Mandrel M5	1					
★	26	PB-2601P26	Pin	1	★	79	PB-2601P79	Ball (Rubber)	1			PB-2601P100D	Screw Mandrel M6	1					
★	27	PB-2601P27	Valve Locking Plug	1	★	80	PB-2601P80	Motor Assembly	1			PB-2601P100E	Screw Mandrel M8	1					
★	28	PB-2601P28	Valve Piston	1	★	81	PB-2601P81	Air Motor End Plug	1	▲	101	PB-2601P100F	Screw Mandrel M10	1					
▲	29	PB-2601P29	O-Ring	1	▲	82	PB-2601T82	O-Ring (2 pcs)	1 SET			PB-2601P100G	Screw Mandrel M12	1					
▲	30	PB-2601P30	O-Ring	1	★	83	PB-2601P83	Distributor	1			PB-2601P101	O-Ring	1					
▲	31	PB-2601P31	O-Ring	1	★	84	PB-2601P84	Circlip	1			PB-2601P102	Pawl (Rubber)	1					
▲	32	PB-2601P32	O-Ring	1	★	85	PB-2601P85	Sintered	1			PB-2601P103	Plug	1					