



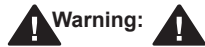
**Read this manual carefully before installing, operating, servicing or repairing.**

#### Working environment:

1. Using these tools in any potentially explosive environment is strictly prohibited.
2. It is always recommended that these types of tools must be operated when standing on a solid or firm location.
3. Always use these tools in a well ventilated area.
4. Slipping, stumbling and falling are the major causes of potential serious injury, therefore, a clean and clutter free surface in the working area before operating the tools is strongly recommended.

#### Air supply and connection requirements:

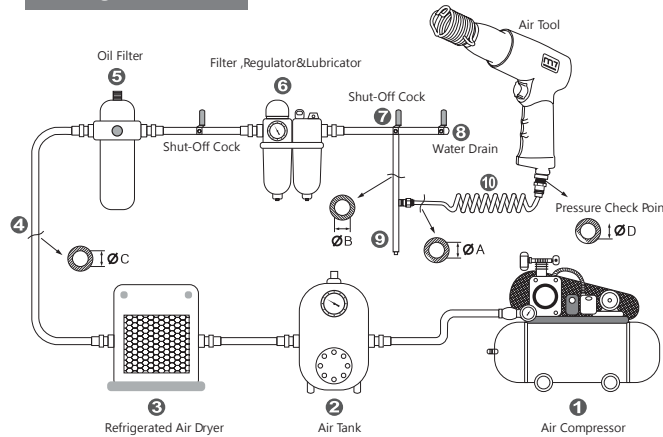
1. The maximum recommended air pressure during operation must not exceed 90 psi (6.3bar). Higher air pressure may create unsafe operating conditions for the tool and the user.
2. The compressed air should be cooled and have a water filter installed at the outlet end of the compressor. Even with a water filter installed, some water may still condense in the piping or hose and will enter the tool mechanism causing premature damage to the tool. Therefore, it is recommended to install an air filter-lubricator device somewhere between the tool and the compressor.
3. Always use an air compressor of the proper capacity to operate each tool.
4. Clean the hose with a blast of compressed air before connecting the hose to the air tool. This will prevent both moisture and dust inside the hose from entering the tool and causing possible rust or malfunction.



#### Warning:

1. This tool should only be used as a hand operated tool. It is powered by compressed air and is not insulated against electric shock.
2. This tool is specially designed for chipping away surface materials or objects. Any application or use of this tool other than what it is designed for is strictly prohibited.
3. High sound levels may cause hearing damage. Always wear hearing protection when operating this tool.
4. User must wear proper clothing. Loose clothing, long hair, stings, straps, belts and jewelry should not be worn when operating this tool.
5. Wearing eye/face protection can reduce the danger of high-speed materials being ejected by the tool.
6. Working with certain materials may create emission of dust and fumes, which may cause a potential explosive environment and a hazard to the health. Wearing correct breathing protection and taking some preventive measures are recommended.
7. Make certain to stand on a solid or firm location and keep body in well-balanced position while operating this tool.
8. Using this tool will cause the ejection of particles when chipping or demolishing. Make sure there is no bystander within the vicinity of working area.
9. To avoid vibration injury, the user should use other effective damping devices, in stead of free hand, to hold the chisel when necessary.
10. Make sure that the all the specifications of the chisel to be used are compatible with this tool.
11. Make sure that the direction of the chips generated from the chisel is properly directed so as not to create a hazard.
12. Always turn off the air supply and disconnect the air hose before changing the chisel or making adjustments on this tool.
13. Release the throttle trigger to avoid danger if there is a failure of energy supply and when connecting or disconnecting the air hose.

#### Working environment:



#### Piping diameters and length requirement:

- ★ The diameter  $\Phi A$  required for the inlet pipe (10) is recommended on the specification table.
- ★ The diameter  $\Phi B$  required for the branch pipe (from 7 to 9) should be 2 times as large as  $\Phi A$ .  $\Phi B = 2 \times \Phi A$
- ★ The diameter  $\Phi C$  required for the primary air supply (from 1 to 8) should be 3 times as large as  $\Phi A$ .  $\Phi C = 3 \times \Phi A$
- ★ The length for the inlet pipe (10) should be less than 15 feet (4.5m).

#### Maintenance:

1. Before connecting the air hose to this tool or after operating, apply 4 or 5 drops of pneumatic oil into the air inlet and run it for several seconds, referring this operation to the attached picture.
2. Maintain this tool regularly by performing the same oiling application every 3 to 4 hours of operation.
3. Do not lubricate tools with flammable or volatile liquids. Use only the lubricant recommended by Mighty-Seven or authorized dealers. Any other lubricant will lead to reduce performance of the tool and permanent damage. Whenever any unauthorized lubricant is used by accident, flush it immediately with recommended pneumatic oil.
4. Follow all the recycling laws of waste disposal once this tool is no longer usable.



#### CE DECLARATION OF CONFORMITY

Original Language

Serial Number: Please refer to the tool

Air Bench Sand Rammer

Item No.: SN - 5302L

We declare under our own responsibility that the above machinery fulfils all the relevant provisions of Machinery Directive 2006/42/EC and its amendment and is manufactured and tested according to the following standards:  
EN ISO 11148-4 / EN ISO 15744 / EN ISO 28927-11

Declared in: Taichung, Taiwan  
Dated: 2021/10/01

Signature

Jay Lin  
Declared by: QA Manager

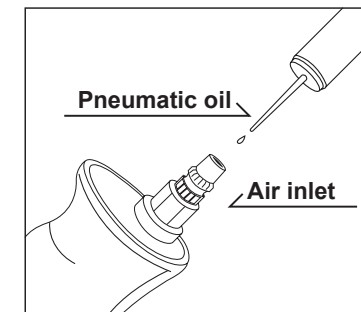
#### Manufacturer:

**Mighty Seven International Co., Ltd.**  
No. 70-25, Ching Qunag Rd., Wu-Jih Shiang,  
Taichung Hsien, 41466 Taiwan  
www.mighty-seven.com

Authorized contact, to compile the technical files :

**King Tony Europe**

3 Rue des imprimeurs ZI République Nord 1.  
86000 POITIERS FRANCE  
TEL : (+33) 5-49-30-30-90  
E-MAIL : christian.aubineau@kingtony.eu

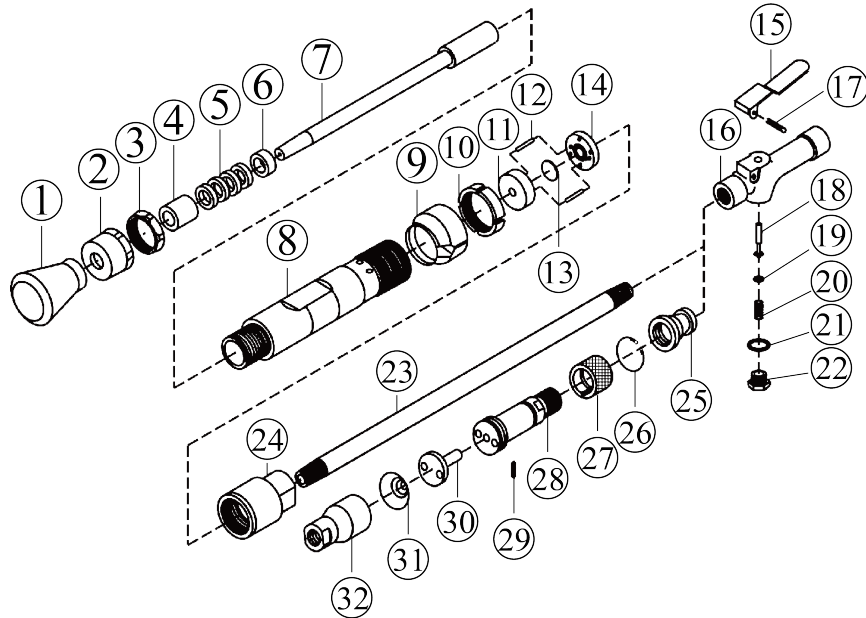


#### Regular maintenance



# Part List

Item No : SN - 5302L



NO.	INDEX NO.	DESCRIPTION	Q'TY
1	SN-5302LP01	Rubber Butt	1
2	SN-5302LP02	Ground	1
3	SN-5302LP03	Ground Nut	1
4	SN-5302LP04	Piston Bush	1
5	SN-5302LT05	Rubber Packing (3pcs)	1 SET
6	SN-5302LP06	Packing Bush	1
7	SN-5302LP07	Piston (260mm)	1
8	SN-5302LP08	Cylinder	1
9	SN-5302LP09	Exhaust Cover	1
10	SN-5302LP10	Lock Nut	1
11	SN-5302LP11	Lower Valve Sheet	1
12	SN-5302LT12	Valve Pin (3 x 18.8) (2 pcs)	1 SET
13	SN-5302LP13	Valve	1
14	SN-5302LP14	Upper Valve Sheet	1
15	SN-5302LP15	Lever	1
16	SN-5302LP16	Handle Body	1
17	SN-5302LP17	Lever Pin (4x22)	1
18	SN-5302LP18	Throttle	1
19	SN-5302LP19	O-Ring	1
20	SN-5302LP20	Spring	1
21	SN-5302LP21	O-Ring	1
22	SN-5302LP22	Throttle Cap	1
23	SN-5302LP23	Pipe	1
24	SN-5302LP24	Cap	1
25	SN-5302LP25	Handle Body Connector	1

26	SN-5302LP26	Snap Ring	1
27	SN-5302LP27	Valve Handle	1
28	SN-5302LP28	Valve Body	1
29	SN-5302LP29	Pin	1
30	SN-5302LP30	Valve	1
31	SN-5302LP31	Spring	1
32	SN-5302LP32	Handle Body	1

Item No.	Speed	Piston Diameter	Stroke	Overall Length	Weight	Air Inlet	Air Hose Size	Air Consumption
	B.P.M.	mm	mm	inch(mm)	kg	PT	inch(mm)	CFM(L/min)
	bpm	mm	mm	inch(mm)	kg	PT	inch(mm)	CFM(L/min)
SN-5302L	1000	22	65	34-1/4-38-1/2 (870-980)	3.75	3/8	3/8(9.5)	17

Uncertainty K=0.5a if a ≤ 5 m/s² or K=0.4a if a > 5 m/s²

## Warranty Card

### Manufacturer's limited warranty

**Mighty Seven International CO., LTD.** offers limited warranty to the products manufactured by **Mighty Seven** and sold by its worldwide authorized dealers. The limited warranty only applies to products that are defective in material and workmanship and does not apply to products which have been abused, misused, modified, or repaired by someone other than **Mighty Seven** or its authorized service representatives. If there is a defective product of **Mighty Seven**, please send it prepaid to the dealer where it was purchased from along with address and contact information. Repairs or replacements are warranted as described above; otherwise, the service of repairs or replacements will be charged.

Please Keep This card For Warranty

Date of Purchase :	Model No. :
Warranty Expiration Date :	Serial No. :
Distributor Stamp	



## Warranty Card

Date of Purchase :	Model No. :
Warranty Expiration Date :	Serial No. :
Name :	
Company Name :	
Address :	
Tel. :	Fax. :
E-mail :	
Type of Business :	
<input type="checkbox"/> Agriculture	<input type="checkbox"/> Paint & Body Repair
<input type="checkbox"/> General Auto Repair	<input type="checkbox"/> Public Work/Gov. Utilities
<input type="checkbox"/> Tire	<input type="checkbox"/> Factory
<input type="checkbox"/> Truck Maintenance/Repair	<input type="checkbox"/> Home Use
<input type="checkbox"/> Car Maker	<input type="checkbox"/> Other _____
Specification of compressor used :	
Horsepower :	Tank Size (liter/gal) :
<input type="checkbox"/> 5 <input type="checkbox"/> 7.5 <input type="checkbox"/> 10 <input type="checkbox"/> 15+	<input type="checkbox"/> 75.7(20) <input type="checkbox"/> 227.1(60) <input type="checkbox"/> 302.8(80) <input type="checkbox"/> 454.2(120)
<input type="checkbox"/> other _____	<input type="checkbox"/> other _____

For Distributor



Original Language

UK DECLARATION OF CONFORMITY



Brand Name :

Serial Number : Please refer to the tool

Air Bench Sand Rammer

Item No. : SN - 5302L

We declare under our own responsibility that the above machinery fulfils all the relevant provisions of (UK-MD) Machinery (Safety) Regulations 2008 (S.I. 2008/1597) and its amendment and is manufactured and tested according to the following standard

• BS EN ISO 11148-4:2012 • BS EN ISO 15744:2008 • BS EN ISO 28927-11:2011

Signature

Jay Lin

Declared by : QA Manager

Declared in: Taichung, Taiwan Date: 2021/07/01

Manufacturer :  
**Mighty Seven International Co., Ltd.**  
No.70-25, Ching Quang Rd., Wuji Dist.,  
Taichung City, 41466 Taiwan  
http://www.mighty-seven.com

Christian Aubineau

General Manager

Authorized contact to compile the technical file:

Established with the EU

**King Tony Europe**  
3 Rue des imprimeurs ZI République Nord 1.  
86000 POITIERS FRANCE  
TEL: (+33)5-49-30-30-90  
E-MAIL: christian.aubineau@kingtony.eu