

# User's Manual

## SC-0320

### AIR VIBRATION INJECTOR PULLER



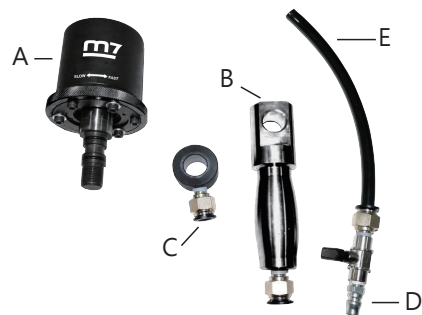
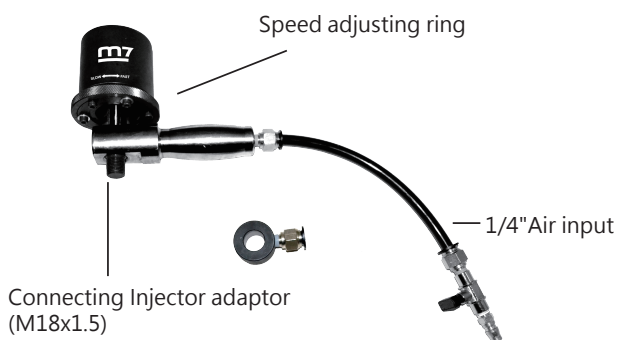
#### 2 IN 1 AIR VIBRATION INJECTOR PULLER

##### Product Feature

Design to replace the sliding hammer without hand using. Save the power and time to pull out the injector from engine. High torque and two speeds design for pull out the injector quickly.

##### Technical details:

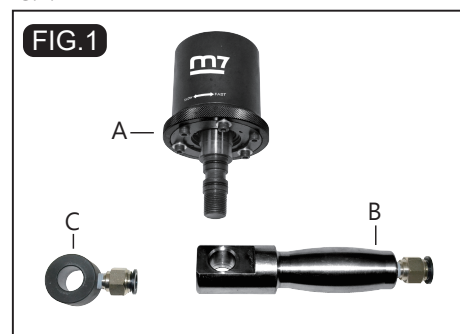
Piston Stroke	38mm
Stroke Speed (BPM)	300/900
Hose Size	12mm
Spindle Thread	M18X1.5
Weight	2.7kgs
Overall Length	500mm
Max Torque	600Nm
Working pressure	6-9bar (87-130.5 psi or 6-9kg/cm <sup>2</sup> )
Max.air pressure	10 bar (140.5psi or 10 kg/cm <sup>2</sup> )
Air inlet size	1/4"



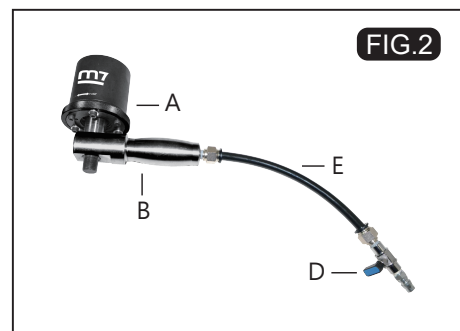
Item No.	Description
A	Air vibration puller
B	Handle
C	Adaptor (Without handle)
D	Air input switch
E	Hose

##### Operation Instruction

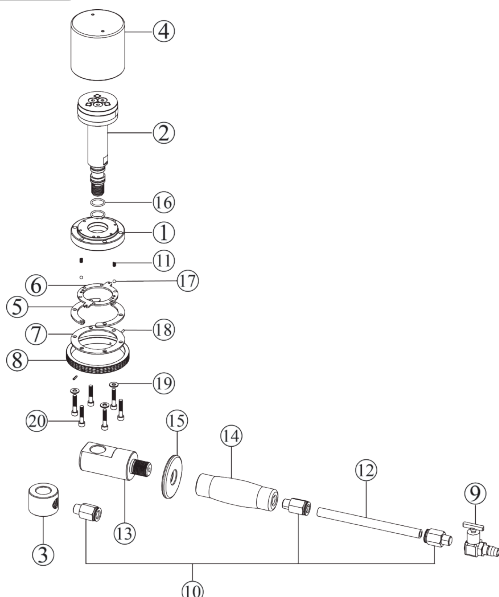
1. Please check the all accessories are complete before using.
2. Choose the suitable adaptor (B or C) to connect A. As FIG.1.



3. Put the Handle B into A and connect D & E as FIG.2.



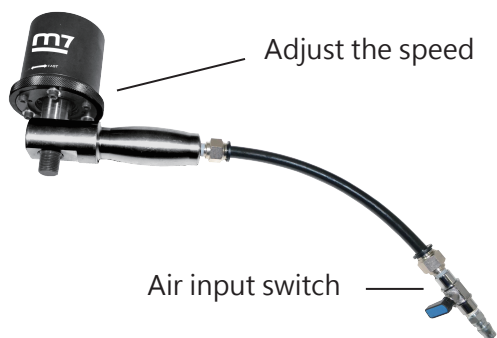
**m7** Air Vibration Injector Puller  
Item No SC-0320



## Part List SC-0320

NO.	INDEX NO.	DESCRIPTION	Q'TY
1	SC-0320P01	Body cap	1
2	SC-0320P02	Piston assembly	1
3	SC-0320P03	Changeable Adaptor	1
4	SC-0320P04	Body	1
5	SC-0320T05	Small disc (2 pcs)	1 SET
6	SC-0320P06	Adjust disc	1
7	SC-0320P07	Bottom disc	1
8	SC-0320P08	Adjust ring	1
9	SC-0320P09	Input valve	1
10	SC-0320T10	Input Adaptor (3 pcs)	1 SET
11	SC-0320T11	Spring (2 pcs)	1 SET
12	SC-0320P12	PU hose	1
13	SC-0320P13	Front Adaptor	1
14	SC-0320P14	Handle	1
15	SC-0320P15	Plastic disc	1
16	SC-0320T16	O ring (2 pcs)	1 SET
17	SC-0320T17	Steel ball (2 pcs)	1 SET
18	SC-0320T18	Hollow pin (2 pcs)	1 SET
19	SC-0320T19	Washer (3 pcs)	1 SET
20	SC-0320T20	Capped hexagon socket head screw (6 pcs)	1 SET

4. Adjust the speed from Figure 1. and open the air switch to operation and pull out the injector.



5. If the injector is loosening, please be careful to switch off the air.

Warning:  
Don't disassembly the tool or change any accessories before using.  
Don't put your finger into the space between spindle and handle.

## Adaptor size list for A

M20	M18	M17	M10	M8	M8	M22	M20	M31	M26
P1.0	P0.75	P1.0	P1.5	P1.25	P1.0	P1.5	P1.5	P0.75	P0.75

M18	M16	M14	M14	M29	M27	M27	M25	M25
P1.5	P1.5	P1.5	P1.5	P1.0	P1.0	P0.75	P1.0	P0.5

- M17 x P1.0 for BOSCH 110
- M18 x P0.75 for BOSCH 120 · M20 x P1.0 for Denso · A
- Adapter with inside thread M14 x P1.5 · outside thread M20 x P1.5
- Adapter with inside thread M14 x P1.5 · outside thread M22 x P1.5 · M14 x P1.5 for Delphi
- M16 x P1.5 for Toyota
- M18 x P1.5 · M8 x P1.0 · M8 x P1.25 · M10 x P1.5 universal adapter
- M14 x P1.5 · M25 x P0.5 for Denso · NISSAN
- M25 x P1.0 for SIEMENS
- M27 x P0.75 for BOSCH · FIAT · BMW · PSAW · PSA · MERCEDES-BENZ · RENAULT
- M27 x P1.0 for complete thread for SIEMENS · M29 x P1.0 for Delphi
- M31 x P0.75 for BOSCH CRIN 1
- M26 x P0.75 for BOSCH CRIN 2



Original Language

UK DECLARATION OF CONFORMITY

**UK  
CA**

Brand Name :

Serial Number : Air vibration injector puller

Item No. : SC-0320

We declare under our own responsibility that the above machinery fulfils all the relevant provisions of (UK-MD) Machinery (Safety) Regulations 2008 (S.I. 2008/1597) and its amendment and is manufactured and tested according to the following standard

• BS EN ISO 11148-4:2012 • BS EN ISO 15744:2008 • BS EN ISO 28927-11:2011

Signature

Jay Lin

Declared by : QA Manager

Declared in: Taichung, Taiwan Date: 2021/07/01

Manufacturer :  
**Mighty Seven International Co., Ltd.**  
No. 70-25, Ching Quang Rd., Wujih Dist.,  
Taichung City, 41466 Taiwan  
http://www.mighty-seven.com

Christian Aubineau

General Manager

Authorized contact to compile the technical file:

**Established with the EU  
King Tony Europe**

3 Rue des imprimeurs ZI République Nord 1.  
86000 POITIERS FRANCE  
TEL: (+33)5-49-30-30-90  
E-MAIL: christian.aubineau@kingtony.eu



EC DECLARATION OF CONFORMITY

Original Language

Serial Number: Please refer to the tool

Air vibration injector puller

Item No.: SC-0320

6.3 bar (90. psi)

We declare under our own responsibility that the above machinery fulfils all the relevant provisions of (MD) Machinery Directive 2006/42/EC and its amendment and is manufactured and tested according to the following standards:

EN ISO 11148-4 / EN ISO 15744 / EN ISO 28927-11

Declared in: Taichung, Taiwan

Dated: 2023/11/01

Signature

Jay Lin  
Declared by: QA Manager

Manufacturer:

**Mighty Seven International Co., Ltd.**  
No. 70-25, Ching Quang Rd., Wu-Jih Dist.,  
Taichung Hsien, 41466 Taiwan  
www.mighty-seven.com



Christian Aubineau

General Manager

Authorized contact, to compile the technical files :

**King Tony Europe**  
3 Rue des imprimeurs ZI République Nord 1.  
86000 POITIERS FRANCE  
TEL: (+33) 5-49-30-30-90  
E-MAIL: christian.aubineau@kingtony.eu

For Distributor

## Warranty Card

### Manufacturer's limited warranty

**Mighty Seven International CO., LTD.** offers limited warranty to the products manufactured by **Mighty Seven** and sold by its worldwide authorized dealers. The limited warranty only applies to products that are defective in material and workmanship and does not apply to products which have been abused, misused, modified, or repaired by someone other than **Mighty Seven** or its authorized service representatives. If there is a defective product of **Mighty Seven**, please send it prepaid to the dealer where it was purchased from along with address and contact information. Repairs or replacements are warranted as described above; otherwise, the service of repairs or replacements will be charged.

Please Keep This card For Warranty

Date of Purchase :	Model No. :
Warranty Expiration Date :	Serial No. :
<b>Distributor Stamp</b>	



## Warranty Card

Date of Purchase :	Model No. :
Warranty Expiration Date :	Serial No. :
Name :	
Company Name :	
Address :	
Tel. :	Fax. :
E-mail :	
<b>Type of Business :</b> <input type="checkbox"/> Agriculture <input type="checkbox"/> Paint & Body Repair <input type="checkbox"/> General Auto Repair <input type="checkbox"/> Public Work/Gov. Utilities <input type="checkbox"/> Tire <input type="checkbox"/> Factory <input type="checkbox"/> Truck Maintenance/Repair <input type="checkbox"/> Home Use <input type="checkbox"/> Car Maker <input type="checkbox"/> Other _____	
<b>Specification of compressor used :</b> Horsepower : <input type="checkbox"/> 5 <input type="checkbox"/> 7.5 <input type="checkbox"/> 10 <input type="checkbox"/> 15+ <input type="checkbox"/> other _____ Tank Size (liter/gal) : <input type="checkbox"/> 75.7(20) <input type="checkbox"/> 227.1(60) <input type="checkbox"/> 302.8(80) <input type="checkbox"/> 454.2(120) <input type="checkbox"/> other _____	